

OCEAN DRILLING PROGRAM

LEG 171B SCIENTIFIC PROSPECTUS

BLAKE NOSE

Dr. Richard D. Norris
Co-Chief Scientist
Woods Hole Oceanographic Institute
Dept. of Geology and Geophysics
MS 23
Woods Hole
MA 02543-1541
U.S.A.

Dr. Dick Kroon
Co-Chief Scientist
University of Edinburgh
Grant Inst.
Dept. of Geology and Geophysics
West Mains Road
Edinburgh
EH9 3JW
U.K.

Dr. Adam Klaus
Staff Scientist
Ocean Drilling Program
Texas A&M University Research Park
1000 Discovery Drive
College Station, Texas 77845-9547
U.S.A.

Paul J. Fox
Director
Science Operations

Jack Baldauf
Manager
Science Operations

Timothy J.G. Francis
Deputy Director
Science Operations

June 1996

Material in this publication may be copied without restraint for library, abstract service, educational, or personal research purposes; however, republication of any portion requires the written consent of the Director, Ocean Drilling Program, Texas A&M University Research Park, 1000 Discovery Drive, College Station, Texas 77845-9547, U.S.A., as well as appropriate acknowledgment of this source.

Scientific Prospectus No. 72
First Printing 1996
Distribution

Electronic copies of this publication may be obtained from the ODP Publications Home Page on the World Wide Web at <http://www-odp.tamu.edu/publications>.

D I S C L A I M E R

This publication was prepared by the Ocean Drilling Program, Texas A&M University, as an account of work performed under the international Ocean Drilling Program, which is managed by Joint Oceanographic Institutions, Inc., under contract with the National Science Foundation. Funding for the program is provided by the following agencies:

Canada/Australia Consortium for the Ocean Drilling Program
Deutsche Forschungsgemeinschaft (Federal Republic of Germany)
Institut Français de Recherche pour l'Exploitation de la Mer (France)
Ocean Research Institute of the University of Tokyo (Japan)
National Science Foundation (United States)
Natural Environment Research Council (United Kingdom)
European Science Foundation Consortium for the Ocean Drilling Program (Belgium, Denmark, Finland, Iceland, Italy, The Netherlands, Norway, Spain, Sweden, Switzerland, and Turkey)

Any opinions, findings, and conclusions or recommendations expressed in this publication are those of the author(s) and do not necessarily reflect the views of the National Science Foundation, the participating agencies, Joint Oceanographic Institutions, Inc., Texas A&M University, or Texas A&M Research Foundation.

This Scientific Prospectus is based on pre-cruise JOIDES panel discussions. The operational plans within reflect JOIDES Planning Committee and thematic panel priorities. During the course of the cruise, actual site operations may indicate to the Co-Chief Scientists and the Operations Superintendent that it would be scientifically or operationally advantageous to amend the plan detailed in this prospectus. It should be understood that any proposed changes to the plan presented here are contingent upon approval of the Director of the Ocean Drilling Program in consultation with the Planning Committee and the Pollution Prevention and Safety Panel.

ABSTRACT

The origin of deep waters is a fundamental control on biogeochemical cycles and global climate. Analysis of time periods in which deep-water formation and global temperature gradients may have been much different from well-known Pleistocene variability offers a test of the models developed to explain climate change. Oceanic circulation in the Paleogene and Cretaceous was quite different from that of the modern ocean in part because of the greenhouse conditions that existed during part of this time and the apparent absence of major centers for deep-water formation in the northern basins. Many authors have suggested that deep-water circulation was enhanced in the Cretaceous and Paleogene by the production of warm, saline waters by evaporation in marginal seas such as the basins of the Tethys, but there are few observational data to provide unequivocal support for this “Warm Saline Deep Water” hypothesis.

The sediments on the Blake Plateau and Blake Nose in the Western North Atlantic offer an ideal record for reconstructing water-mass chemistry and circulation in the Cretaceous and early Cenozoic. The plateau’s location in the Northern Hemisphere, proximal to the western end of the Tethys seaway, makes the deposited sediments ideal for determining northern sources of deep and intermediate waters. Ocean Drilling Program Leg 171B will drill five sites in a transect from the margin of the Blake Plateau to the edge of the Blake Escarpment. Paleogene and Barremian–Maastrichtian strata crop out or are present at shallow burial depths in present water depths of 1200 m to more than 2700 m across the plateau. Today this depth range spans deep thermocline water to upper North Atlantic Deep Water. The plateau spanned a similar range of depths in the early Cenozoic because margin subsidence was largely complete by the Early Cretaceous, and minor subsidence since then is partly offset by reduced sea level after the Eocene.

The proposed transect of cores will be used to (1) interpret the sea-level history and associated vertical structure of the Paleogene and Cretaceous oceans and test the Warm Saline

Deep Water hypothesis near the proposed source areas; (2) provide critically needed low-latitude sediments for interpreting tropical sea-surface temperature (SST) and climate cyclicity in the Cretaceous and Paleogene; (3) study the effects of sea-level change on sedimentation patterns down the continental slope during the Cretaceous and Paleogene; (4) provide well-preserved microfossils for refinement of low-latitude Paleogene and Cretaceous chronologies and evolutionary dynamics; (5) recover complete Cretaceous/Paleogene and Paleocene/Eocene boundaries along a depth transect to describe the events surrounding the boundary and water depth-related changes in sedimentation of the boundary beds; (6) recover sections suitable for magneto-stratigraphy so that low-latitude biochronologies may be tied directly to the magnetic reversal record; and (7) interpret the thermocline and intermediate water structure of low-latitude, Early Cretaceous oceans and refine the biochronology of this period.

INTRODUCTION

The deep waters of the world represent one of the largest reservoirs of nutrients and CO₂ in the biosphere. The history of deep ocean circulation is integrally tied to the CO₂ storage capacity of the oceans and the preservation of carbonate sediments in the deep sea (Farrell and Prell, 1991). Aging of deep water by remineralization of sinking organic material makes these waters extremely corrosive and gives them a major role in the inorganic carbon cycle by remineralizing carbonates that would otherwise be stored in sedimentary sequences. Hence, changes in the age and sources of deep waters regulate the alkalinity and CO₂ content of the deep sea.

Studies of Paleogene and Cretaceous deep-water circulation and its impact on low-latitude climate are needed to understand the mechanisms that regulate the formation and geographic distribution of nutrient-rich deep waters in the modern oceans. Examining deep-water history during periods with different boundary conditions will allow us to better appreciate the mechanisms that drive biogeochemical cycles. Ocean Drilling Program (ODP) Leg 171B will drill a transect on the Blake Nose (Figs. 1, 2) to test current models for the Paleogene and Cretaceous history of intermediate and deep waters in the Atlantic and Tethys. Recovery of well-preserved pelagic microfossils and a detailed history of sediment sources will be used to determine the linkages between climatic and biological evolution and changes in deep-water circulation during the Paleogene and Cretaceous.

Presently, deep waters are formed in the North Atlantic and Southern Ocean, and it is the mixture and aging of these water masses that produces the characteristic chemistries of the deep Indian and Pacific Oceans. The distribution of $\delta^{13}\text{C}$ in Paleogene benthic foraminifers suggest that most deep waters of this era have a southern source, but periods of weak latitudinal gradients and short episodes of anomalously warm deep water indicate that deep or intermediate waters may have formed near the equator or in a northern source area (Miller et al., 1987; Barrera and Huber, 1990; Stott and Kennett, 1990; Pak and Miller, 1992). An-

other theory is that intermittent production of Warm Saline Deep Water may have continued in the Oligocene to middle Miocene in the remnants of the Tethys seaway (Woodruff and Savin, 1989). Alternatively, northern component waters may have formed throughout this time, most probably in the North Atlantic (Wright et al., 1992). The absence of a Paleogene depth transect in the North Atlantic prevents resolution of this debate. The northern subtropical location of the Blake Plateau and its position adjacent to the western opening of the Tethys seaway would place it in the mixing zone between water masses of different origins during the Paleogene and Late Cretaceous.

Most reconstructions of deep-water geometry have focused on the late Neogene to Holocene record. Paleogene sequences have generally been too deeply buried to be recovered either completely or consistently along depth transects. Yet, the three-dimensional structure of Mesozoic and early Cenozoic oceans is of great interest because these oceans record climates and patterns of water-mass development under conditions different from those of modern seas. As such, an understanding of Paleogene and Cretaceous deep-water structure is necessary to provide boundary conditions on global climate models (GCMs) and test the assumptions employed in models of the Quaternary oceans. Likewise, records of surface-water temperatures and variations in biotic assemblages are needed to constrain reconstructions of latitudinal thermal gradients.

BACKGROUND

Depth-Transect Strategy

Recently, much attention has been focused on reconstructing the Cenozoic history of deep-water chemistry and carbonate dissolution by drilling depth transects in the equatorial oceans. Transects have been drilled on the Walvis Ridge in the South Atlantic, Ontong-Java Plateau in the Pacific, Madinley Rise and Oman margin in the Indian Ocean, Maud Rise in the Southern Ocean, and, most recently, the Ceara Rise in the equatorial Atlantic. The strategy behind these transects is to determine bathymetric changes in carbonate preservation.

These data provide a history of changes in the lysocline depth, oceanic alkalinity, and surface ocean carbonate production (e.g., Curry et al., 1990; Peterson et al., 1992; Berger et al., 1993). Transects that include sites at shallow depths also can be used to reconstruct the changes in sources of intermediate waters and detect patterns of water-mass circulation (Curry and Lohmann, 1986; Slowey and Curry, 1987; Kennett and Stott, 1990). The origins of a water mass can be inferred both by measuring the characteristic $\delta^{13}\text{C}$ and Cd chemistry preserved in benthic foraminifers and by analyzing the faunal composition (Streeter and Shackleton, 1979; Boyle and Keigwin, 1982; Curry et al., 1988; Boyle, 1990; Charles and Fairbanks, 1992; Wright et al., 1992; Oppo and Rosenthal, 1994).

The best existing depth transect through pre-Neogene sections was drilled on Maud Rise during ODP Leg 113. The transect of two sites found intriguing evidence for deep-water formation at low latitudes (the Warm Saline Deep Water hypothesis; Kennett and Stott, 1990). However, these sites were within the region of formation of southern source waters and are not well located to detect the chemistry or history of northern source waters, should they exist. A depth transect in the North Atlantic would be well placed to identify northern component water masses. Patterns of mixing between water masses from different sources could be used to reconstruct their three-dimensional structure and origins (Corfield and Norris, 1996). The depth transect will aid in documentation of patterns of sedimentation across the slope and the history of ocean circulation.

STUDY AREA

Marine Geology

Blake Nose, or Blake Spur, is a salient on the eastern margin of the Blake Plateau, due east of northern Florida (Figs. 1, 2). It is mostly less than 1000 m deep but drops sharply to water depths >4000 m at the Blake Escarpment—a nearly vertical wall formed by erosion of the continental slope. In contrast, the Blake Nose is a gentle ramp that reaches a maximum

depth of about 2700 m at the Blake Escarpment. The Blake Plateau and Blake Nose are composed of an 8–12 km thick sequence of Jurassic and lower Cretaceous limestones that are capped by less than 1 km of Upper Cretaceous and Cenozoic deposits (Benson, Sheridan, et al., 1978).

Seismic records show the presence of buried reef buildups at the landward end of the Blake Nose (Figs. 2, 3). Fore-reef deposits and pelagic oozes, built seaward of the reef front, rest on relatively flat-lying Neocomian–Barremian shallow-water carbonates and serve largely to define the present bathymetric gradient along the Blake Nose. A hiatus probably exists between the Aptian–Albian and the Campanian. Upper Cretaceous to middle Eocene carbonate oozes that rest on the Barremian reef-front deposits are typically <400–600 m thick.

Paleobathymetry

Shallow-water limestone of Barremian age with a foraminiferal fauna that suggests depths of deposition of <50 mbsl was recovered at Deep Sea Drilling Project (DSDP) Site 390 (Benson, Sheridan, et al., 1978). Water depths increased substantially by the late Albian. Aptian–Albian pelagic oozes at the eastern end of the Blake Nose were probably deposited at >500 m water depth based on ratios of planktonic and benthic foraminifers (Benson, Sheridan, et al., 1978). If we assume that the reef was at sea level during the Albian–Aptian and that the depth gradient in the fore-reef deposits has not changed since that time, then the present difference in depth between the reef top and the seaward edge of the Blake Nose (~1500 m) probably reflects the greatest water depth at which the oozes were deposited on Blake Nose during the Aptian–Albian interval. Upper Cretaceous and younger sediments were probably deposited near their present range of water depths (1100–2700 m; Benson, Sheridan, et al., 1978).

Seismic Stratigraphy

Six distinctive reflectors penetrated at Site 390 (Fig. 3) are hypothesized to be of the following ages and lithologies:

1. Oligocene/Eocene nannofossil ooze and phosphorite (Reflector Orange);
2. Paleocene/lower Eocene nannofossil ooze and chert (Reflector Red);
3. Lower/upper Paleocene nannofossil ooze (Reflector Green);
4. Campanian nannofossil ooze (Reflector Purple);
5. Aptian–Albian variegated nannofossil claystone (Reflector Blue); and
6. Aptian–Albian/ Barremian periplatform limestone (Reflector Yellow).

Tracing these reflectors updip along the *Glomar Challenger* single-channel seismic (SCS) line to its intersection with multichannel seismic (MCS) Line TD-5 shows that the Eocene and lower Paleocene–Campanian sediments appear to have nearly uniform thicknesses across most of the Blake Nose (Fig. 4). The middle Eocene is typically about 75 m thick, as it is at DSDP Site 390, whereas the lower Paleocene–Campanian sequence is about 45 m thick and consists of about 20 m of Paleocene and 20 m of Maastrichtian sediments. The Eocene and Paleocene intervals thin, but do not pinch out, at the extreme western end of the Blake Nose on MCS Line TD-5UW because sediments of these ages are found in USGS borehole ASP-3.

In contrast, the middle to upper Paleocene is highly variable in thickness, ranging from about 20 m at Site 390 to about 200 m in several areas updip of this site. On *Gloria Farnella* 1987 SCS Line 18, the middle Paleocene varies in thickness and appears to fill a channel in the lower Paleocene/Upper Cretaceous sequence. Hence, there may be an unconformity in the middle Paleocene.

Reflector Purple forms a strong and laterally continuous reflector from the Blake Escarpment to the Blake Plateau. Immediately below Reflector Purple there is a series of strong reflectors that pinch out against this surface. Apparently, Reflector Purple is a major erosional surface of early Campanian age or older.

SCS lines made during the *Glomar Challenger* initial survey and more recent SCS and

MCS lines show that as much as 800 m of strata is between the Campanian and Aptian reflectors updip of Site 390. These mid-Cretaceous to Barremian deposits form a series of major clinoforms that build out from, and ultimately overlap, a reef complex that underlies Reflector Yellow (Barremian). Reflector Purple (?pre-Campanian) truncates these clinoforms. There may be two cycles of erosion within the clinoform stack because those that overlap the reef complex downlap against underlying clinoform deposits.

The lithology of the mid-Cretaceous(?) sediments that make up the clinoform stack is unknown. However, deposits immediately below Reflector Purple at Site 390 are nannofossil oozes and calcareous clays of Aptian–Albian age. The Aptian ooze at Site 390 can be traced updip in MCS Line TD-5 into the upper sequence of clinoforms below Reflector Purple. These clinoforms are successively cut into by the pre-Campanian erosion surface, which suggests that the remains of the top of the clinoform sequence have a progressively older age updip from Site 390. Hence, it is unlikely that any deposits younger than the Albian are preserved within the clinoform sequence, contrary to the interpretation of the DSDP Leg 44 scientific party. Site 390 is about 60 km northeast of the pre-Barremian(?) reef front so it is probable that the lower sequence of clinoforms may be redeposited periplatform deposits or reef-front debris.

This proposed seismic interpretation is partly corroborated by tracing the Paleogene reflectors updip into the ASP-3 borehole at the extreme western end of MCS Line TD-5UW (Figs. 2, 3). The upper ~80 m of this hole is middle Miocene sediment followed by ~30 m of middle Eocene and >15 m of Paleocene (foraminifer Biozone P2). This hole confirms that Eocene and Paleocene sediments are present at shallow burial depths in a drape across the whole of the Blake Nose.

The interpretation presented here differs from that presented by C.W. Poag in Hutchinson et al. (in press) largely because of differences in how we trace reflectors away from the condensed section at DSDP Site 390 (Fig. 5). Poag's interpretation traces the Maastrichtian and

older reflectors to a consistently deeper level than in this interpretation and suggests that Santonian–Coniacian or Turonian–Cenomanian strata may be present on the Blake Nose between shotpoints 1130 and 1700 on MCS Line TD-5 (Figs. 3, 4). These Lower Cretaceous and mid-Cretaceous deposits correspond to a series of reflectors truncated by Reflector Purple and we have interpreted them as Albian–Aptian in age.

Should Poag's interpretation be correct, none of the proposed sites would penetrate deeper than the Maastrichtian. Therefore, the transect would recover extremely thick sequences of Paleocene and Eocene strata. The expanded nature of the section would improve the possibility of recovering an expanded Cretaceous/Paleogene boundary section along most or all of the transect because earliest Danian age fossils were recovered from the comparatively condensed record at Site 390. However, the transect would not have the opportunity to collect Lower Cretaceous deposits.

Regional Sedimentation Rates

Sedimentation rates estimated from the results of Site 390 are uniformly low (0.2–1.5 cm/k.y.). The highest rates are 1.5 cm/k.y. for the middle Eocene (Benson, Sheridan, et al., 1978). These low values almost certainly underestimate sedimentation rates on the shallower portions of the Blake Nose, where thicknesses of Aptian–Albian, Paleocene, and Eocene strata are much greater than at Site 390. For example, if the interval between Reflectors Green and Red is entirely Paleocene, sedimentation rates may have reached >4 cm/k.y. because the interval is >200 m thick. Likewise, sedimentation rates were probably above 1 cm/k.y. in the Aptian–Albian interval below Reflector Purple over much of Blake Nose.

SCIENTIFIC OBJECTIVES

The objectives of Leg 171B will be to drill five shallow sites (170–600 m penetration) in a transect from the margin of the Blake Plateau to the edge of the Blake Escarpment. The pro-

posed transect of cores will be used to

1. Interpret the vertical structure of the Paleogene oceans and test the Warm Saline Deep Water hypothesis near the proposed source areas, with a related objective to provide critically needed low-latitude sediments for interpreting tropical sea-surface temperature (SST) and climate cyclicity in the Paleogene;
2. Recover complete Paleocene/Eocene and Cretaceous/Paleogene boundaries along a depth transect to describe the events surrounding the boundaries and water depth-related changes in sedimentation of the boundary beds;
3. Interpret the thermocline and intermediate water structure of the low-latitude Cretaceous oceans and refine the biochronology and magnetostratigraphy of this period;
4. Study Cretaceous and Paleogene climate variability by analysis of marine biota and regional sedimentological patterns;
5. Study the rate and mode of evolution of marine biota in the Cretaceous and Paleogene oceans; and
6. Investigate climate variability and plate motions using the paleomagnetic signal.

Primary Objectives

Paleogene Climate History and Paleoceanography

Paleogene strata are known to exist at shallow burial depths at all sites along the proposed drilling transect. There are two principle issues that will be addressed by recovery of cores from these areas: (1) low-latitude surface temperature history during the Paleocene and Eocene and (2) sources of deep waters during the Paleocene and Eocene.

The Eocene had the most equitable climate of the Cenozoic (Dawson et al., 1976; Shackleton and Boersma, 1981; Axelrod, 1984; Rea et al., 1990). Isotopic data suggest that both surface waters and deep waters reached their maximum temperatures in the early Eocene (Savin, 1977; Miller et al., 1987; Stott and Kennett, 1990). High latitudes were substantially warmer than present and reached temperatures of 15°–17°C (Zachos et al., 1994). This warm interval lasted 3–4 m.y. and marked fundamentally different climate conditions than were present at any other time in the Cenozoic. Latitudinal ther-

mal gradients were probably less than 6°–8°C during the Eocene, about one-half the modern pole-to-equator gradient (Zachos et al., 1994). Yet the interval is poorly known both because low-latitude records are rare and those that do exist are either spot cored or disturbed by drilling through Eocene cherts (Stott and Zachos, 1991).

High global temperatures in the early Eocene promise a means to test GCMs run under conditions of increased atmospheric CO₂ (Popp et al., 1989; Berner, 1990). Knowledge of low-latitude temperatures provides a major constraint on GCMs because equatorial seas play a major role in regulating heat exchange with the atmosphere (Barron and Washington, 1982). It is possible that the relatively equitable Eocene climates were promoted by higher heat transport between latitudes (Covey and Barron, 1988). Hence, low-latitude temperature data are needed to constrain Paleocene climate models. More generally, the Eocene warm interval provides a test for climate models that integrate latitudinal thermal gradients, atmospheric CO₂ levels, and ocean-atmosphere heat transport.

Drilling on the Blake Plateau will provide an opportunity to study each of these issues. The plateau was located on the western gateway from the relatively restricted Tethys/Atlantic basins to the open Pacific during the early Paleogene. Comparisons between Caribbean and existing equatorial Pacific sites could show whether deep waters aged as they entered the Pacific as expected if the Tethys was a major source of saline bottom waters. Existing records from the Caribbean (DSDP Site 152) and Central Pacific (DSDP Site 577; ODP Site 865) provide some of the few low-latitude temperature estimates for the Eocene. However, more complete temperature records are needed to document surface-water temperatures in the Eocene tropics and subtropics.

Late Paleocene Event

There is increasing evidence for a short-lived increase in global temperatures in the late Paleocene. The late Paleocene thermal maximum coincides with an abrupt extinction

of benthic foraminifers and a marked excursion in the isotopic chemistry of both benthic and planktonic foraminifers. There is good evidence that production of Antarctic Deep Water may have been shut down at this time and deep waters may have originated at low latitudes (Kennett and Stott, 1990; Pak and Miller, 1992).

Stable isotope evidence suggests that the latest Paleocene event was a brief exception to the general formation of deep waters adjacent to Antarctica (Miller et al., 1987). The Southern Ocean has consistently had some of the youngest waters found in the deep sea since at least the Late Cretaceous (Barrera and Huber, 1990, 1991; Pak and Miller, 1992; Zachos et al., 1992). However, the stable isotope data are strongly biased toward studies of high southern latitude cores and cannot eliminate the possibility that there may have been other sources of deep or intermediate water. Indeed, marked reductions in the $\delta^{13}\text{C}$ latitudinal gradient suggest that there may have been either extremely low rates of surface-water production or other sources of deep waters during the late Paleocene and late early Eocene. Hence, drill sites located near the ends of the Tethys seaway are needed to monitor the possible contribution of deep waters from the low latitudes and to monitor the biological effects of the latest Paleocene thermal maximum.

Leg 171B drilling will provide the opportunity to study the latest Paleocene extinction event at relatively low latitudes as well as provide the first continuous early Eocene Atlantic record of the benthic foraminifer repopulation after this extinction. Paleocene benthic foraminifer faunas were relatively uniform across a wide paleodepth, while Eocene assemblages are much more distinct at different depths. Depth-dependent changes in benthic foraminifer assemblages will provide critical data for interpretation of changes in the structure and sources of deep waters throughout the Paleogene.

Cretaceous–Paleogene Event

The *Report of the Second Conference on Scientific Ocean Drilling (COSOD II)* recommends that recovery and analysis of sections penetrating the Cretaceous/Paleogene

(K/P) boundary should be given high priority by the Ocean Drilling Program. Cretaceous/Paleogene boundary beds are typically thin in the deep sea, yet they contain our best evidence for the geographic distribution and magnitude of the extinctions and the subsequent recovery of the biosphere.

Recent evidence of the impact of a bolide on the Yucatan Platform has focused debate over the history and consequences of this Cretaceous–Paleogene event. Evidence of an impact in the Caribbean includes discoveries of glass spherules and shocked quartz in boundary sections at Haiti and Mimbral, as well as gravity measurements and drill core data that imply the existence of a 180-km-diameter structure of Maastrichtian–earliest Paleocene age beneath the Yucatan (Sigurdsson et al., 1991a, 1991b; Margolis et al., 1991; Alvarez et al., 1991; Hildebrand and Boynton, 1990). Reanalysis of DSDP Sites 536 and 540 in the Gulf of Mexico has led to the discovery of thick deposits of reworked carbonates of diverse ages. These deposits contain upper Maastrichtian nannofossils and occur immediately below lowest Paleocene sediments. Alvarez et al. (1991) have interpreted these K/P boundary deposits as part of the ejecta blanket.

Objectives of K/P boundary drilling on the Blake Plateau include the recovery of a detailed record of the events immediately following the impact such as the sequence of ejecta fallout and settling of the dust cloud. DSDP Hole 390A contains foraminiferal markers for the earliest Paleocene P α zone and the latest Maastrichtian nannofossil zones suggesting the section may be biostratigraphically complete (Gradstein et al., 1978). Unfortunately, rotary drilling of this hole extensively mixed the soft ooze, making recovery of a detailed record of K/P boundary events impossible. Modern piston and extended core barrel (XCB) coring technology should produce better recovery and less disturbed core than were obtained from Hole 390A.

Specific Objectives

Specific objectives include the following:

1. Reconstruction of climatic and biological evolution immediately prior to the end-Cretaceous extinction.
2. Evaluation of the recovery of the oceans and biotas following the extinction. Piston-cored sections could provide evidence for the magnitude of the extinctions, their duration, and patterns of diversification following the event. Cores containing records of the lowermost Paleocene should also be suitable for studies of the geochemical history of the oceans in the absence of a diverse plankton community.
3. Depth-dependent patterns of sedimentation across the K/P boundary. Our proposed drilling would penetrate the boundary section at present water depths of about 1410–2600 m allowing us to determine whether there were depth-dependent changes in the carbonate lysocline or organic matter preservation after the extinction.
4. Depth-dependent changes in benthic foraminiferal biofacies across the extinction boundary in a low-latitude setting.

Cretaceous Paleoceanography

A depth transect in Cretaceous strata offers an unparalleled opportunity to study the hydrographic structure of the low-latitude Cretaceous oceans. There are six principle issues that could be addressed by recovery of a depth transect of cores from this region.

1. Patterns of turnover in middle Maastrichtian nannofossils, foraminifers, and mollusks. Evidence for numerous Southern Ocean sites suggests a major turnover of austral species at about 71 Ma, which coincides with a major carbon isotope excursion and extinction of inoceramid mollusks (Ehrendorfer, 1993). Low-latitude sites with good recovery and good preservation through this interval are rare, so it is still unclear whether the high-latitude turnovers are synchronous with low-latitude biotic crises.
2. Determine the response of low-latitude SST to the Maastrichtian cooling trend at high latitudes.
3. Cyclostratigraphy of the Cretaceous. Can orbital cycles be recognized in low-latitude sections and, if so, can they be used to refine Cretaceous time scales? Also, what is the frequency of Cretaceous orbital periodicity and how do patterns of orbital forcing compare with those of the Cenozoic?
4. Determine the sources of deep waters during the Barremian–Albian, Campanian, and

Maastrichtian at times when the North Atlantic was a relatively enclosed basin.

5. Analyze depth dependency on the formation and expression of carbonate cycles and sediment accumulation rates.
6. Study the lithology, benthic foraminiferal biofacies, and depositional patterns across an ancient slope in relationship to sea-level changes and regional climate.

Paleogene and Cretaceous Evolutionary Dynamics

Sediments recovered at Site 390 contain an extremely well-preserved microfossil fauna and flora. We hope to use similar microfossil assemblages recovered during Leg 171B to

1. Refine and integrate microfossil biochronologies between the various groups of microorganisms as well as with cyclostratigraphy and magnetostratigraphy and
2. Investigate patterns of ecological evolution through stable isotope, morphometric, and faunal analyses. Related to this effort is the study of the timing and origin of speciation events in relation to paleoceanographic history.

Mesozoic and Paleogene Magnetic Records

The intensity of the magnetic susceptibility record has the potential to reveal variability in the climate system associated with orbital cycles and variations in the supply of magnetic minerals. In addition, a well-defined paleomagnetic record in oriented cores will be used to determine paleomagnetic poles for the North American plate during the Paleogene. This is a poorly defined part of the North American apparent polar wander path and one in which the polar motion changed from a Cretaceous standstill to a Cenozoic track leading to the current pole.

LOGGING AND DRILLING STRATEGY

Drilling Strategy

Triple coring with the advanced hydraulic piston corer (APC) technique will be done at five sites in a transect from the margin of the Blake Plateau to the edge of the Blake Escarpment (Figs. 2, 3). Proposed Sites BN-1, BN-2Alt, BN-3, BN-4Alt, and BN-5Alt are primary sites and proposed Sites BN-1Alt and BN-4 are alternates. Use of the extended core barrel (XCB) is planned for all sites except for proposed Site BN-1. Double XCB coring is planned for proposed Sites BN-3 and BN-5Alt, whereas time limitations force us to plan drilling only single XCB holes at proposed Sites BN-2Alt and BN-4Alt. The safety panel has mandated that sites on Blake Nose be drilled up the depth transect from proposed Site BN-1 to proposed Site BN-5Alt. If time permits, we have permission to deepen Sites BN-2, BN-3, and BN-4Alt XCB holes to 700 mbsf. In addition, proposed Site BN-5Alt may also be deepened to 700 mbsf should time permit, and there is a consensus to attempt to recover more of the Aptian-Albian section. Alternatively, we may choose to drill an alternate site (BN-4 or BN-1Alt) should time permit at the end of the leg.

Boreholes will be located along an existing, high-quality multichannel line that is crossed by a dense web of single-channel and 3.5-kHz lines. Seismic interpretations are supported by a series of JOIDES, USGS, and DSDP boreholes as well as observations from submersibles. The boreholes are intended to penetrate between 170 to 600 m of nannofossil ooze of Eocene, Paleocene, Maastrichtian, Campanian, and Aptian–Albian age. All holes will extend below Reflector Purple, which is identified as basal Campanian in Hole 390A. All holes should penetrate middle to lower Eocene oozes and Paleocene and Maastrichtian–Albian strata. Drilling at proposed Sites BN-2Alt and BN-3 has a high probability of recovering a complete K/T boundary sequence because these boreholes will penetrate the most stratigraphically complete sequences, where the upper Paleocene to Maastrichtian section is about 300 m thick.

The drilling strategy is intended to recover a depth transect in pre-Eocene strata that approaches the depth-resolution possible in upper Pleistocene piston core transects (e.g., Slowey and Curry, 1987, 1992; Lynch-Stieglitz et al., 1994). This will ensure a complete

>1300-m depth transect from 1200 to 2500 mbsl in the Paleocene–middle Eocene and bathyal Barremian–basal Albian. The K/P boundary will be recovered in at least four of the five sites and will permit studies of sedimentation of the boundary beds across a depth transect. Triple APC coring will ensure nearly 100% recovery of the sedimentary section in the uppermost 160 m of each site.

There is no evidence from previous drilling or from existing seismic records for appreciable hydrocarbons in the slope sediments proposed for drilling. It is unlikely that there are mobile hydrocarbons of Early Cretaceous or younger age on the Blake Nose. The sediments have never been deeply buried to depths sufficient for hydrocarbon maturation. It is possible that hydrocarbons may exist in the limestones below the pelagic drape of Barremian to Eocene sediments, but the proposed drilling will not penetrate these limestones except during redrilling of Site 390 (proposed Site BN-1). Truncation of the Albian–Barremian clinoforms by the middle Cretaceous unconformity (Reflector Purple) could represent a stratigraphic trap. However, there is no evidence of hydrocarbons below this unconformity at Site 390. In addition, there are no obvious cross-strata reflectors that could represent trapped hydrocarbons within the sedimentary section proposed for drilling.

A complication to drilling in this area is the existence of cherts in the lower Eocene and upper Paleocene. Seven partly lithified layers of limestone and chert were encountered in Hole 390A near the edge of the Blake Plateau. The layers are all about 5 cm thick or less and consist of irregularly replaced carbonates in a 30-m-thick interval of nannofossil ooze. Once through this section, the lower Paleocene through upper Aptian section is entirely ooze at Site 390.

The Blake Nose is covered with a thin layer of phosphorite sand that rests on an erosion surface of late Paleogene or early Neogene age. Erosion has truncated the Paleogene section to varying degrees, particularly at the landward end of the transect (toward proposed Site BN-5Alt). Therefore, it is not necessary to recover the core top in good condition to meet the paleoceanographic objectives of the leg. However, we will attempt to piston core surficial sediments, if possible. In the event that the phosphorite damages the drilling tools or slows drilling operations, we will wash the phosphorite away prior to cutting our first APC core.

Logging Plan

Logging data will be important to achieve the objectives of this proposed leg. Logging will enhance site-to-site correlation, which is critical for reconstructing hydrography. Unfortunately, logging is typically restricted to parts of the hole more than 75–100 m below seafloor (mbsf). Consequently, intersite correlation in the Eocene portion of the record will rely on logs generated from the recovered cores.

Only holes deeper than 400 m will be logged, and these holes will be logged with the triple combination (triple-combo) tool string, Formation MicroScanner (FMS), and geological high-sensitivity magnetic tool (GHMT) strings. The triple-combo provides measurements of porosity, density, and electrical resistivity that will be used to describe the lithology, sedimentary fabric, degree of lithification, and fluid composition. The FMS tool string produces electrical resistivity images of the wall of the hole that can be used to study the orientation and structure of bedding, diagenetic features, fractures and sonic velocity. The GHMT provides continuous measurements of magnetic susceptibility and may provide a magnetic reversal stratigraphy if the magnetization of the sediments is sufficiently strong.

Sampling Strategy

One of the primary objectives of Leg 171B is to reconstruct water column structure, sea surface temperature, and bottom water chemistry at high temporal resolution. We hope to sample at ~3-5 ky resolution to obtain records of biological and physical oceanography at temporal resolutions used routinely in studies of the late Neogene. High resolution sampling in the Cretaceous and Paleogene will provide some of the first histories of the ancient oceans at a resolution similar to that frequently obtained from Pleistocene sediments and will facilitate comparison of the oceanographic dynamics of these time periods. In contrast to Neogene sections in which multiple APC cores are easily obtained because they are close to the seafloor, at some sites we may only be able to retrieve one copy of these Paleogene/Cretaceous sections since we must obtain these sections in a transect across a range of water depths.

Given low regional sedimentation rates in the Cretaceous and Paleogene (1-3 cm/ky), the high temporal-resolution sampling required, and the operational reality of obtaining these deeply-buried sections across a transect of water depths indicates that in special circumstances we may need to exceed JOIDES sampling policy both in sample density and volume to achieve the primary paleoceanography, paleoclimatic, and paleomagnetic cruise objectives. Sampling of π or more of the core volume at specific levels may occasionally be required to achieve cruise objectives in instances even where only one hole or interval exists; however, no such samples will be taken without the express consent of both co-chiefs and the curatorial representative. This may be necessary even in instances where we are able to produce composite sections from multiple holes (to obtain the most continuous and undisturbed sequence). Sample volumes must be large enough to ensure adequate numbers of planktic and benthic foraminifers for biostratigraphic and stable isotope/trace element studies and will depend on exact nature of sediment recovered. This is not meant as a blanket statement for heavy sampling of all cores. In fact, every effort will be made to stay within sample guidelines by first attempting to assemble consortia of scientists to develop plans to attack these problems with the most efficient use of samples and/or by encouraging scientists to work on time slices or a subset of sites (as high resolution sampling of all core at all sites will result in an unreasonably large number of samples to be analyzed by any individual scientist for the scientific results). These samples will be taken during a post-cruise sampling party.

Low resolution sampling will be carried out on board ship to conduct shipboard description/characterization, to facilitate pilot studies, to identify sections requiring high-resolution post-cruise sampling, and to provide samples for studies which do not require a high temporal resolution.

Critical boundary sampling: We expect that critical boundaries will be recovered in most or all of the holes drilled during this leg. All K-P and P-E boundary cores will be treated as critical intervals, subject to appropriate ODP policies and procedures. No samples will be removed from an interval within 3 m above or below the boundary until a consortium of interested scientists has formulated a detailed sampling plan, except for studies aimed at characterizing the interval (including smear slides and toothpick paleontological samples), or for pre-approved studies of the ephemeral properties deemed essential to K-P investigation.

PROPOSED SITES

Primary Sites (by order of drilling)

Proposed Site BN-1

Proposed Site BN-1 is a reoccupation of Site 390. The principle objectives are to recover a sequence of Eocene through Campanian strata from deep water that can be compared with age-equivalent, but more expanded, sections at shallower water depths. In particular, the middle Eocene and lower Paleocene–Maastrichtian are thick enough to permit high-resolution studies of Eocene paleoceanography and the nature of the K/P boundary event.

About 200 m of sediment was recovered at Site 390, including 160 m of pelagic sediment that ranges in age from middle Eocene(?) to Barremian and 40 m of Barremian oolitic limestone. The pelagic sediments were entirely stiff to soupy nannofossil ooze with the exception of seven 5-cm-thick limestone and chert stringers encountered in the 30-m-thick lower Eocene and upper Paleocene sections. Eocene sediments comprise about 75 m of the cored section whereas the Paleocene (35 m), Maastrichtian (28 m), Campanian (2 m), and Barremian to lower Albian pelagic sediments (20 m) make up the remainder. During rotary core barrel (RCB) drilling of Hole 390A, coring penetrated about 50 m/hr except during drilling through the cherts, when the drilling rate dropped to about 20 m/hr.

Proposed Site BN-1 is included mainly to increase the total depth range of the transect (to about 1371 m total water-depth range) and recover sediments deposited well within the Paleogene equivalent of modern upper deep water. Further, because Site 390 was rotary cored, the existing core is useless for high-resolution paleoceanography. This is a good site for recovering a moderately thick and well-preserved Eocene–Paleocene section and for estimating the chemistry of upper deep water. However, the Cretaceous sequence is too condensed to be of much use for paleoceanography. The Mesozoic section should be of interest to sedimentologists interested in the control of water depth on sedimentation at the K/P boundary and processes of sedimentation (e.g., tying expanded sections at proposed Site BN-3 into the more condensed intervals at proposed Site BN-1).

Proposed Site BN-2Alt

Proposed Site BN-2Alt is located in 2257 m water depth. The site is located to take advantage of an unusually thick sequence of upper Paleocene(?) strata. At this location, the depth to Reflector Purple is about 400 m, primarily because of an unusually expanded section above Reflector Green (lower/upper Paleocene) and below Reflector Red (Paleocene/Eocene Boundary). The upper Paleocene is probably about 200 m thick at this site and the lower Paleocene–Campanian section (between Reflectors Green and Purple) is about 75 m thick. The sediment packages between the other reflectors have similar thicknesses to their equivalents at Site 390.

This is a high-priority site because it represents an expanded section of Paleocene–Cretaceous sediments that are ideal as a deep-water end-member of the depth transect. The expanded section should help considerably in refining Paleocene and Eocene stratigraphy and paleoceanography because the best available low-latitude sites (such as DSDP Sites 577 and 384 and ODP Site 758) are comparatively condensed. The Aptian and older Cretaceous section is also a good end-member for a thermocline–intermediate water depth transect in the Early Cretaceous. In addition, recovery at the site will most likely include a complete K/P boundary with well-preserved microfossils. Drilling is proposed to about 600 mbsf to recover 400 m of middle Cretaceous–Eocene sediments and 200 m of Lower Cretaceous sediments.

Proposed Site BN-3

Proposed Site BN-3 is located at shotpoint 1821 on MCS Line TD-5. It is similar to proposed Site BN-2Alt in terms of the thickness of the sediment packages between all the reflectors. As at Site BN-2Alt, the middle Eocene is about 75 m thick and overlies a 50-m section of lower Eocene to uppermost Paleocene (Reflector Orange to Reflector Red). The middle Paleocene is nearly 200 m thick (above Reflector Green) and overlies a 100-m-thick drape of lower Paleocene to Campanian strata (above Reflector Purple). The site is located at the intersection of the *Glomar Challenger* SCS line and MCS Line TD-5 at about 1972-m water depth.

The section below Reflector Purple consists of 370 m of Lower Cretaceous(?) deposits. The middle Cretaceous represents the distal upper package of clinoforms that overlaps the pre-Barremian(?) reef about 40 km to the southwest and can be traced updip to deposits below proposed Site BN-4. Coring is proposed to a depth of about 600 mbsf to recover the Paleogene and part of the Lower Cretaceous sections.

Proposed Site BN-3 is about 300 m shallower than proposed Site BN-2Alt so both sites add to the resolution of the depth transect. Further, both proposed Sites BN-2Alt and BN-3 penetrate a thick section of Paleocene sediments, which should provide a fairly high-resolution, well preserved, sedimentary sequence that is singularly lacking in existing ODP/DSDP holes that penetrate this paleoclimate. Recovery at proposed Site BN-3 should include a well-preserved K/P boundary interval and expanded Aptian to older Cretaceous sequence. The site could be used as an alternate for proposed Site BN-2Alt, but it would also serve as a site at intermediate depth between proposed Sites BN-4 and BN-2Alt, where it improves the likelihood of correlating accurately between shallower and deeper sites and increases the probability of recovering a complete section of the Lower Cretaceous strata.

Proposed Site BN-4Alt

Proposed Site BN-4Alt is an alternate to proposed Site BN-4. The proposed site is located on shotpoint 1461 at a water depth of 1652 m. The objectives are similar to those for proposed Site BN-3, but the site would enable recovery of a slightly thicker section (~600 m) at a deeper water depth than at proposed Site BN-4. Recovery of a more expanded section above Reflector Purple than at proposed Site BN-4 would be at the expense of about 100 m of section below this reflector.

Proposed Site BN-5Alt

Proposed Site BN-5Alt is located on shotpoint 1241 on MCS Line TD-5 at a water

depth of 1293 m. Proposed Site BN-5Alt would core about 100 m of Oligocene and younger strata, 200 m of Eocene to Upper Cretaceous(?) deposits, and 150 m of Lower Cretaceous deposits for a total penetration of about 450 m.

Proposed Site BN-5Alt is included because it is the shallowest site that is likely to have a good Cenozoic section. At 1293 m depth, proposed Site BN-5Alt is well within modern intermediate water and hence is a good end-member for paleoceanographic studies. The site probably lacks a K/P boundary section, or it is very condensed relative to proposed Sites BN-2Alt, BN-3, and BN-4. However, recovery should include an Eocene to upper Paleocene section similar to the deeper sites as well as a shallow-water, end-member Lower Cretaceous section. Hence, this is a desirable site primarily because it expands the total depth range of the transect and increases the probability of reconstructing the vertical hydrographic structure from the late Paleocene to middle Eocene and in the Early Cretaceous. Correlation to proposed Site BN-2Alt will permit a depth transect of about 900 m between proposed Sites BN-5Alt and BN-2Alt, where the sections are expanded compared to that at proposed Site BN-1.

Alternate Sites

Proposed Site BN-1Alt

Proposed Site BN-1Alt would allow recovery of a thicker section than at proposed Site BN-1 (400 m compared to ~170 m) at a slightly shallower depth (2480 mbsf). Nearly all the increased thickness would be in a more expanded Paleocene–Eocene section. The site is located at shotpoint 2241 on MCS Line TD-5. This site is proposed as an alternate to proposed Site BN-1.

Proposed Site BN-4

Proposed Site BN-4 lies at a water depth of 1410 m where about 200 m of upper Paleocene to Eocene strata over about 100 m of Campanian to lower Paleocene deposits are apparently preserved. Reflector Purple is underlain by about 250 m of deposits that appear to correlate with the seismic package that lies between Reflectors Blue and Purple at proposed Site BN-3. These are most likely Barremian to pre-lower Albian nannofossil ooze and clay similar to sediments recovered from the equivalent interval at Site 390. Coring will penetrate about 250 m below Reflector Purple for a total recovery of about

550 m of section.

Proposed Site BN-4 is ~560 m shallower than proposed Site BN-3 and more than 800 m shallower than proposed Site BN-2Alt and should contain a record of the Paleogene equivalent of modern lower intermediate water. This is a critical site primarily because it provides the best shallow-water end-member for the depth transect through Paleocene and Lower Cretaceous strata. In addition, recovery at the site should include a K/P boundary section.

REFERENCES

- Alvarez, W., et al., 1991. Proximal impact deposits at the Cretaceous-Tertiary boundary in the Gulf of Mexico: reinterpreting DSDP Sites 536 and 540. *Geol. Soc. Amer. Abstracts*, A420. (Abstract)
- Axelrod, D., 1984. An interpretation of Cretaceous and Tertiary biota in polar regions. *Palaeogeog. Palaeoclim. Palaeoecol.*, 45:105–107.
- Barrera, E., and Huber, B., 1990. Evolution of Antarctic waters during the Maastrichtian: foraminifer oxygen and carbon isotope ratios, Leg 113. In Barker, P.F., Kennett, J.P., et al., *Proc. ODP, Sci. Results*, 113: College Station, TX (Ocean Drilling Program), 813–823.
- , 1991. Paleogene and early Neogene oceanography of the Southern Indian Ocean: Leg 119 foraminifer stable isotope results. In Barron, J., Larsen, B., et al., *Proc. ODP, Sci. Results*, 119: College Station, TX (Ocean Drilling Program), 693–717.
- Barron, E.A., and Washington, W.M., 1982. The atmospheric circulation during warm geologic periods: is the equator-to-pole surface temperature gradient the controlling factor. *Geology*, 10:633–636.
- Benson, W.E., and Sheridan, R.E., et al., 1978. *Init. Repts. DSDP*, 44: Washington (U.S. Govt. Printing Office).
- Berger, W.H., Kroenke, L.W., Mayer, L.A., et al., 1993. *Proc. ODP, Sci. Results*, 130: College Station, TX (Ocean Drilling Program).
- Berner, R.A., 1990. Atmospheric carbon dioxide over the Phanerozoic time. *Science*, 249:1382–1386.
- Boyle, E.A., 1990. Quaternary deepwater paleoceanography. *Science*, 249:863–870.
- Boyle, E.A., and Keigwin, L.D., 1982. Deep circulation of the Atlantic during the last 150,000 years, geochemical evidence. *Science*, 218:784–787.
- Charles, C., and Fairbanks, R., 1992. Evidence from Southern Ocean sediments for the effect of North Atlantic deep-water flux on climate. *Nature*, 355:416–419.
- Corfield, R., and Norris, R., 1996. Deep water circulation in the Paleocene ocean. In Knox, R.W., Corfield, R.M., Dunay, R.E. (Eds.), *Correlation of the early Paleogene in Northwest Europe. London Geol. Soc. Spec. Publ.*, 101:443–456.
- Covey, C., and Barron, E., 1988. The role of ocean heat transport in climate change. *Earth Science Reviews*, 24:429–445.
- Curry, W.B., Duplessy, J.-C., Labeyrie, L.D., and Shackleton, N.J., 1988. Changes in the distribution of $\delta^{13}\text{C}$ of deepwater PCO_2 between the last glaciation and the Holocene. *Paleoceanography*, 3:317–342.
- Curry, W.B., and Lohmann, G.P., 1986. Late Quaternary sedimentation at the Sierra Leone Rise (eastern equatorial Atlantic Ocean). *Marine Geology*, 70:223–250.
- Curry, W.B., Cullen, J.L., and Backman, J., 1990. Carbonate accumulation in the Indian Ocean during the Pliocene: evidence for a change in productivity and preservation at about 2.4 Ma. In Duncan, R.A., Backman, J., Peterson, L.C., et al., *Proc. ODP, Sci. Results*, 115: College Station, TX (Ocean Drilling Program), 509–518.

- Dawson, M., West, R., Langston, W., and Hutchinson, J., 1976. Paleogene terrestrial vertebrates: northernmost occurrence, Ellesmere Island, Canada. *Science*, 192:781–782.
- Ehrendorfer, T., W., 1993. Late Cretaceous (Maastrichtian) Calcareous nanoplankton biogeography [Ph.D. thesis]. Woods Hole Oceanographic Institution, WHOI-93-15.
- Farrell, J.W., and Prell, W., 1991. Pacific CaCO₃ preservation and $\delta^{18}\text{O}$ since 4 Ma: paleo-oceanic and paleoclimatic implications. *Paleoceanography*, 6:485–498.
- Gradstein, F., Bukry, D., Habib, D., Renz, O, Roth, P., Schimdt, R., Weaver, F., and Wind, F., 1978. Biostratigraphic summary of DSDP Leg 44: Western North Atlantic Ocean. In Benson, W. E., Sheridan, R.E., et al., *Init. Repts. DSDP*, 44: Washington (U.S. Govt. Printing Office), 657–662.
- Hildebrand, A., and Boynton, W., 1990. Proximal Cretaceous-Tertiary boundary impact deposits in the Caribbean. *Science*, 248:843–847.
- Hutchinson, D.R., Poag, C.W., and Popenoe, P. in press. Geophysical database of the East Coast of the United States: Southern Atlantic margin—stratigraphy and velocity from multichannel seismic profiles. *USGS Open-File Report*, 95-27.
- Kennett, J., and Stott, L.D., 1990. Proteus and proto-oceanus: Paleogene oceans as revealed from Antarctic stable isotope results. In Barker, P.F., Kennett, J.P., et al., *Proc. ODP, Sci. Results*, 113: Washington (U.S. Govt. Printing Office), 865–880.
- Lynch-Stieglitz, J., Fairbanks, R., and Charles, C., 1994. Glacial-interglacial history of Antarctic Intermediate Water: relative strengths of Antarctic versus Indian Ocean sources. *Paleoceanography*, 9:7–30.
- Margolis, S., et al., 1991. Tektite glass from the Cretaceous-Tertiary boundary, proximal to the proposed impact crater in northern Yucatan. *GS. Abstr.*, A421. (Abstract)
- Miller, K., Janecek, T., Katz, M., and Keil, D., 1987. Abyssal circulation and benthic foraminiferal changes near the Paleocene/Eocene boundary. *Paleoceanography*, 2:741–761.
- Oppo, D.W., and Rosenthal, Y., 1994. Cd/Ca changes in a deep Cape Basin core over the past 730,000 years: response of circumpolar deepwater variability to Northern Hemisphere ice sheet melting? *Paleoceanography*, 9:661–675.
- Pak, D., and Miller, K.G., 1992. Paleocene to Eocene benthic foraminiferal isotopes and assemblages: implications for deep-water circulation. *Paleoceanography*, 7:405–422.
- Peterson et al., 1992. Cenozoic carbonate accumulation and compensation depth changes in the Indian Ocean. In Duncan, R.A., Rea, D.K., von Rad, U., and Weissel, J.K. (Eds.), *Synthesis of Results from Scientific Drilling in the Indian Ocean*. Geophys. Monogr., Am. Geophys. Union, 70:311-333. [2-9-95]
- Popp, B.N., Takigiku, Hayes, J., Louda, J.W., and Baker, E.W., 1989. The post Paleozoic chronology and mechanism of C¹³ depletion in primary marine organic matter. *Amer. Jour. Sci.*, 289:436–454.
- Rea, D., Zachos, J., Owen, R., and Gingerich, P., 1990. Global change at the Paleocene/Eocene boundary: climatic consequences of tectonic events. *Palaeogeog. Palaeoclim. Palaeoecol.*, 79:117–129.

- Savin, S., 1977. The history of the Earth's temperature during the past 100 million years. *Ann. Rev. Earth Planet. Sci.*, 5:319–355.
- Shackleton, N.J., and Boersma, A., 1981. The climate of the Eocene ocean. *Journal of the Geological Society of London*, 138:153-157.
- Sigurdsson, H., Bont, M., Pradel, Ph., and D'Hondt, S., 1991a. Geochemical constraints on source region of Cretaceous/Tertiary impact glasses. *Nature*, 353:839–842.
- Sigurdsson, H., D'Hondt, S., Arthur, M., Bralower, T., Zachos, J., van Fossen, M., and Channell, J., 1991b. Glass from the Cretaceous-Tertiary boundary in Haiti. *Nature*, 349:482–487.
- Slowey, N., and Curry, W., 1987. Structure of the glacial thermocline at Little Bahama Bank. *Nature*, 327:54-58.
- Slowey, N., and Curry, W., 1992. Enhanced ventilation of the North Atlantic subtropical gyre thermocline during the last glaciation. *Nature*, 358:665–668.
- Stott, L., and Kennett, J., 1990. New constraints on early Tertiary paleoproductivity from carbon isotopes in foraminifera. *Nature*, 350:526–529.
- Stott, L.D., and Zachos, J.P., 1991. Paleogene paleoceanography workshop report. JOI-USSAC, Lake Arrowhead, CA, Jan. 4–6, 1991.
- Streeter, S.S., and Shackleton, N.J., 1979. Paleocirculation of the deep North Atlantic: 150,000 year record of benthic foraminifera and oxygen-18. *Science*, 203:168–171.
- Woodruff, F., and Savin, S.M., 1989. Miocene deep-water oceanography. *Paleoceanography*, 4:87–140.
- Wright, J.D., Miller, K.G., and Fairbanks, R.G., 1992. Early and middle Miocene stable isotopes: implications for deep-water circulation and climate. *Paleoceanography*, 7:357–389.
- Zachos, J., Rea, D., Sieto, K., Nomura, R., and Nitsuma, N., 1992. Paleogene and early Neogene deep water paleoceanography of the Indian Ocean as determined from benthic foraminifer stable carbon and oxygen isotope records. *Geophysical Monograph*, 70:351–385.
- Zachos, J. C., Stott, L.D., and Lohmann, K.C., 1994. Evolution of early Cenozoic marine temperatures. *Paleoceanography*, 9:353–387.

SITE TIME ESTIMATE TABLE

Site	Latitude, longitude	Water depth (mbsl)	Penetration (mbsf)	Operations	10.5-kt transit (days)	Coring (days)	Log (days)	Total (days)	
Transit, Barbados to BN-1					5.4				
BN-1 (DSDP Site 390)	30°08.724'N 76°06.900'W	2586	160	Hole A: APC 160 m, OR, HF		1.3		1.3	
			160	Hole B: APC 160 m		0.7		0.7	
			160	Hole C: APC 160 m		0.9		0.9	
BN-2Alt	30°05.436'N 76°14.412'W	2257	600	Hole A: APC 160 m, OR, HF, XCB 600 m, log	0.1	3.9	1.1	5.1	
			160	Hole B: APC 160 m		0.6		0.6	
			160	Hole C: APC 160 m		0.9		0.9	
BN-3	30°03.306'N 76°21.108'W	1972	600	Hole A: APC 160 m, OR, HF, XCB 600 m, log	0.1	3.7	1.1	4.9	
			600	Hole B: APC 160 m		3.1		3.1	
			160	Hole C: APC 160 m		0.9		0.9	
BN-4Alt	29°59.538'N 76°31.416'W	1652	500	Hole A: APC 160 m, OR, HF, XCB 500 m, log	0.2	2.8	1.0	4.0	
			160	Hole B: APC 160 m		0.5		0.5	
			160	Hole C: APC 160 m		0.8		0.8	
BH-5Alt	29°57.090'N 76°37.596'W	1293	450	Hole A: APC 160 m, OR, HF, XCB 450 m, log	0.1	2.4	1.0	3.5	
			450	Hole B: APC 160 m, XCB 450 m		1.9		1.9	
			160	Hole C: APC 160 m		0.7		0.7	
Transit BN-5ALT to Charleston, SC					1.0				
					Estimated time	7.0	25.0	4.2	36.2
					Available time	6.0	30.0		36.0
Alternate sites									
BN-1Alt	30°07.884'N 76°09.276'W	2480	400	Hole A: APC 160 m, OR, HF, XCB 400 m, log		2.7	1.1	3.8	
			400	Hole B: APC 160 m, XCB 400 m		2.3		2.3	
			400	Hole C: APC 160 m, XCB 400 m		2.6		2.6	
BN-4	29°58.368'N 76°34.518'W	1404	550	Hole A: APC 160 m, OR, HF, XCB 550 m, log		3.1	1.0	4.1	
			550	Hole B: APC 160 m, XCB 550 m		2.6		2.6	
			550	Hole C: APC 160 m, XCB 550 m		2.9		2.9	

*HF = temperature measurement; OR = core orientation; log = triple-combo, FMS, and GHMT tool strings.

FIGURE CAPTIONS

Figure 1. Location of ODP Leg 171B Blake Nose paleoceanographic drilling transect.

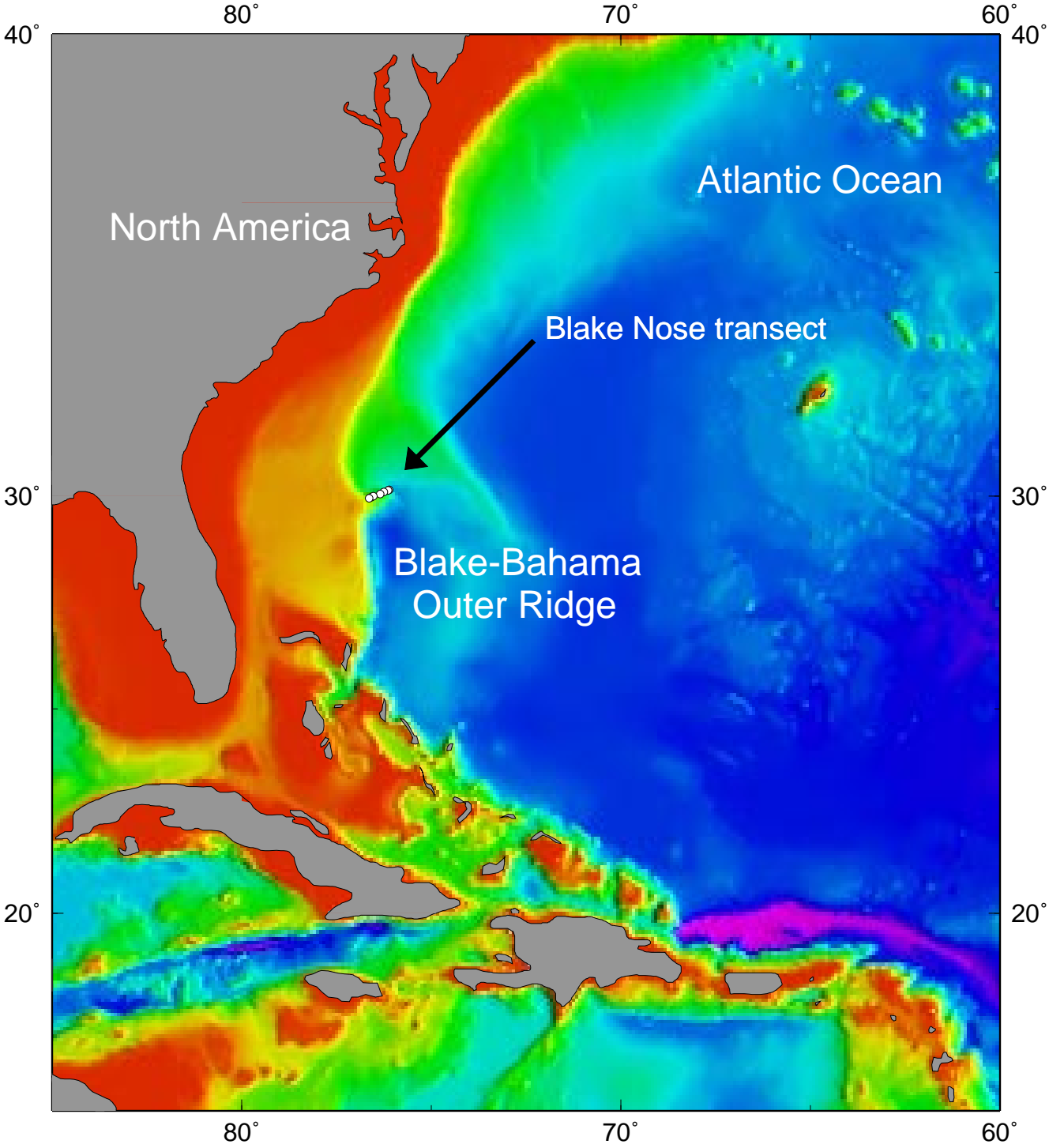
Figure 2. Location of Blake Nose, Western North Atlantic. Insert shows proposed drill sites and seismic lines shown in Figures 3 (dashed line) and 5 (shaded line).

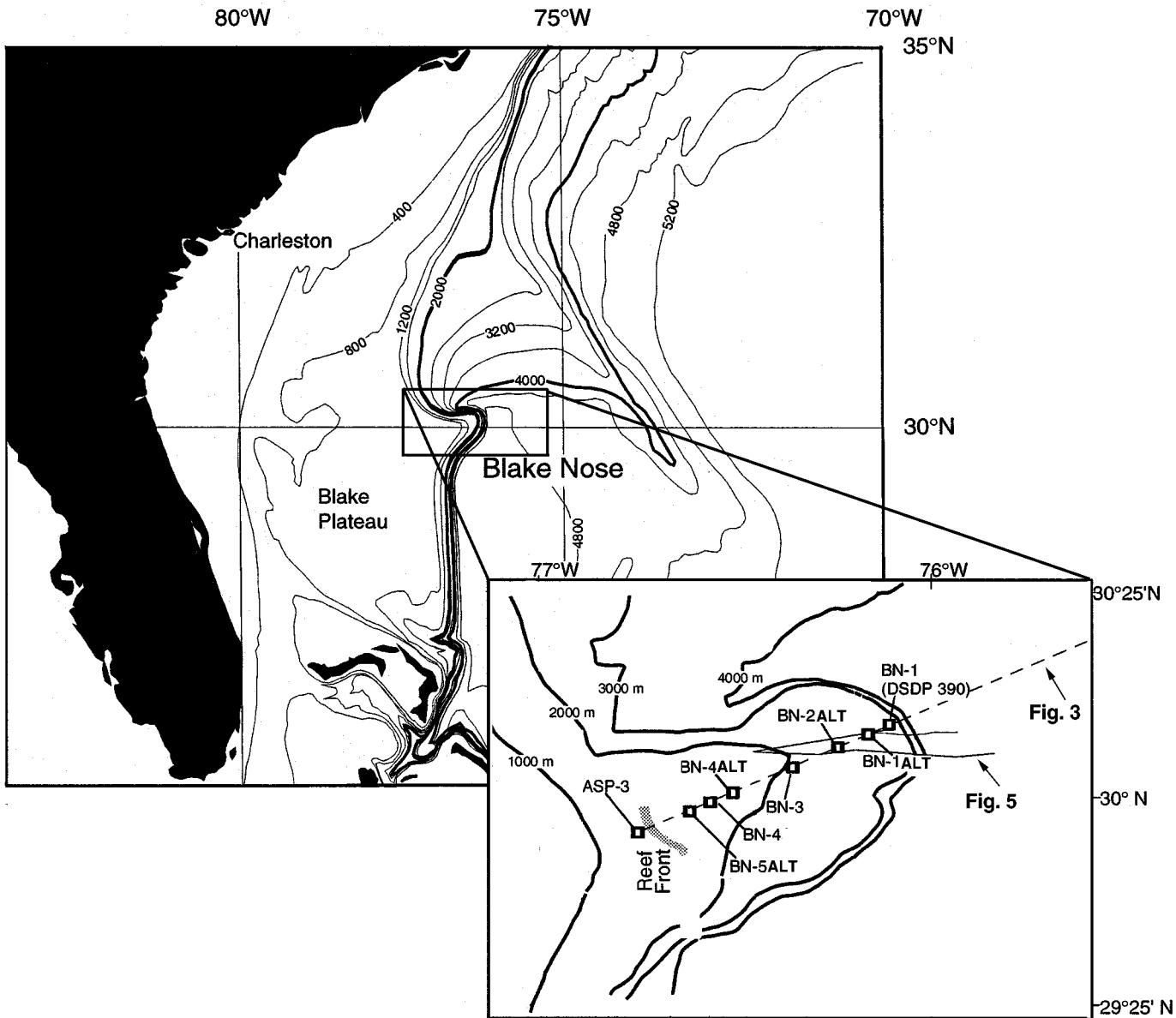
Figure 3. Schematic seismic interpretation of MCS Line TD-5 across Blake Nose showing the major reflectors, their interpreted ages, and proposed drill sites (primary sites = bold lines; alternate sites = thin lines). Our interpreted ages of reflectors are shown in parentheses and age interpretations of Hutchinson et al. (in press) are shown in square brackets. Numbers identifying various reflectors are those interpretations of Hutchinson et al. and correspond to numbers shown on Figure 4. Location of seismic line is shown in Figure 2.

Figure 4. Interpretation of MCS Line TD-5 from the Leg 44 scientific party. Note that this interpretation suggests the presence of a substantial thickness of mid- and Upper Cretaceous pelagic/hemipelagic sediments on Blake Nose.

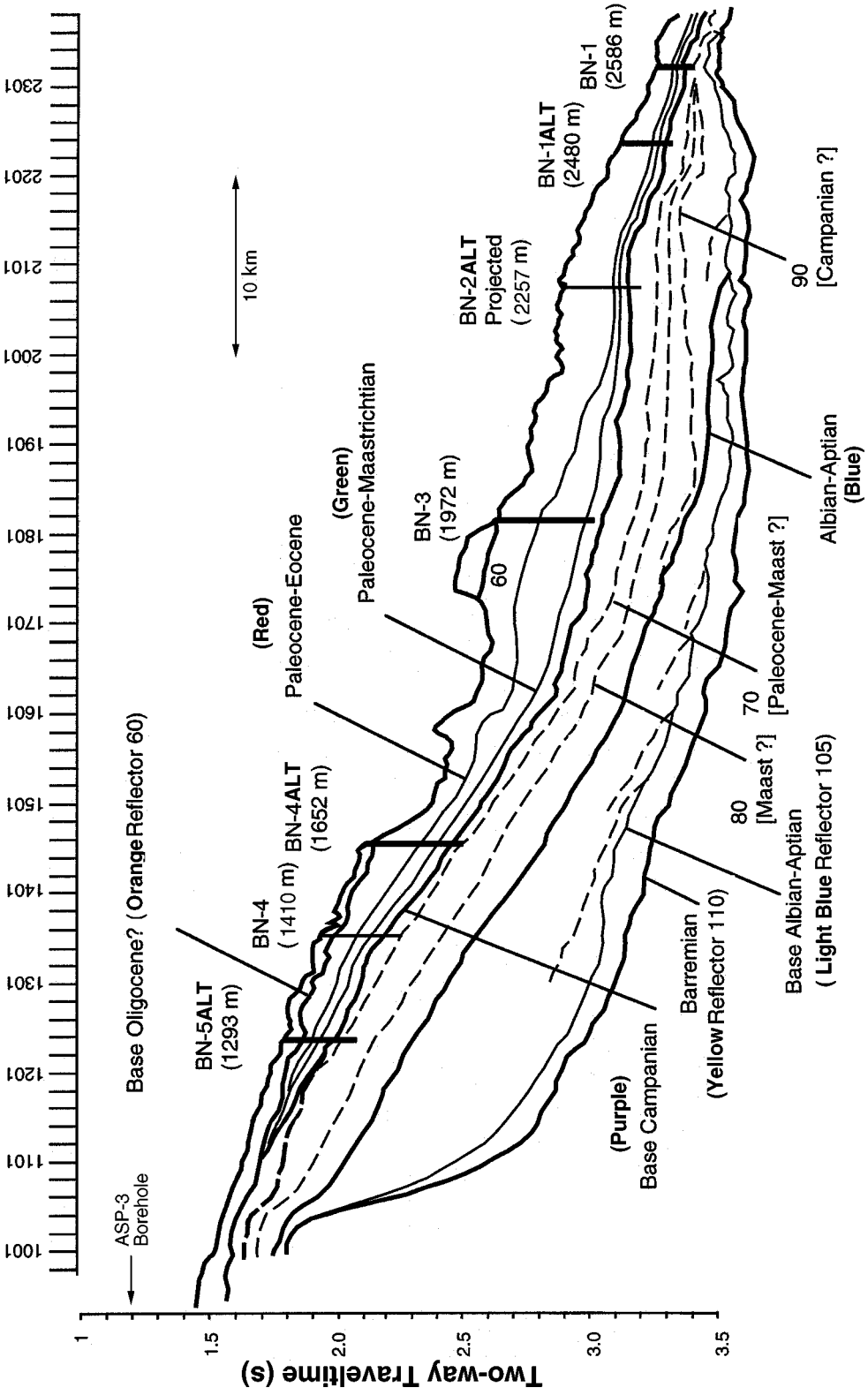
Figure 5. Portion of seismic Line TD-5UW showing the tie to DSDP Site 390 interpreted by Hutchinson et al. (in press). This interpretation has traced seismic units [70] and [80] at Site 390 into systematically deeper levels of the seismic profile at shotpoint 2101 than we would. Location of seismic line is shown in Figure 2, and units identified on Figure 3.

ODP Leg 171B, Blake Nose paleoceanographic transect





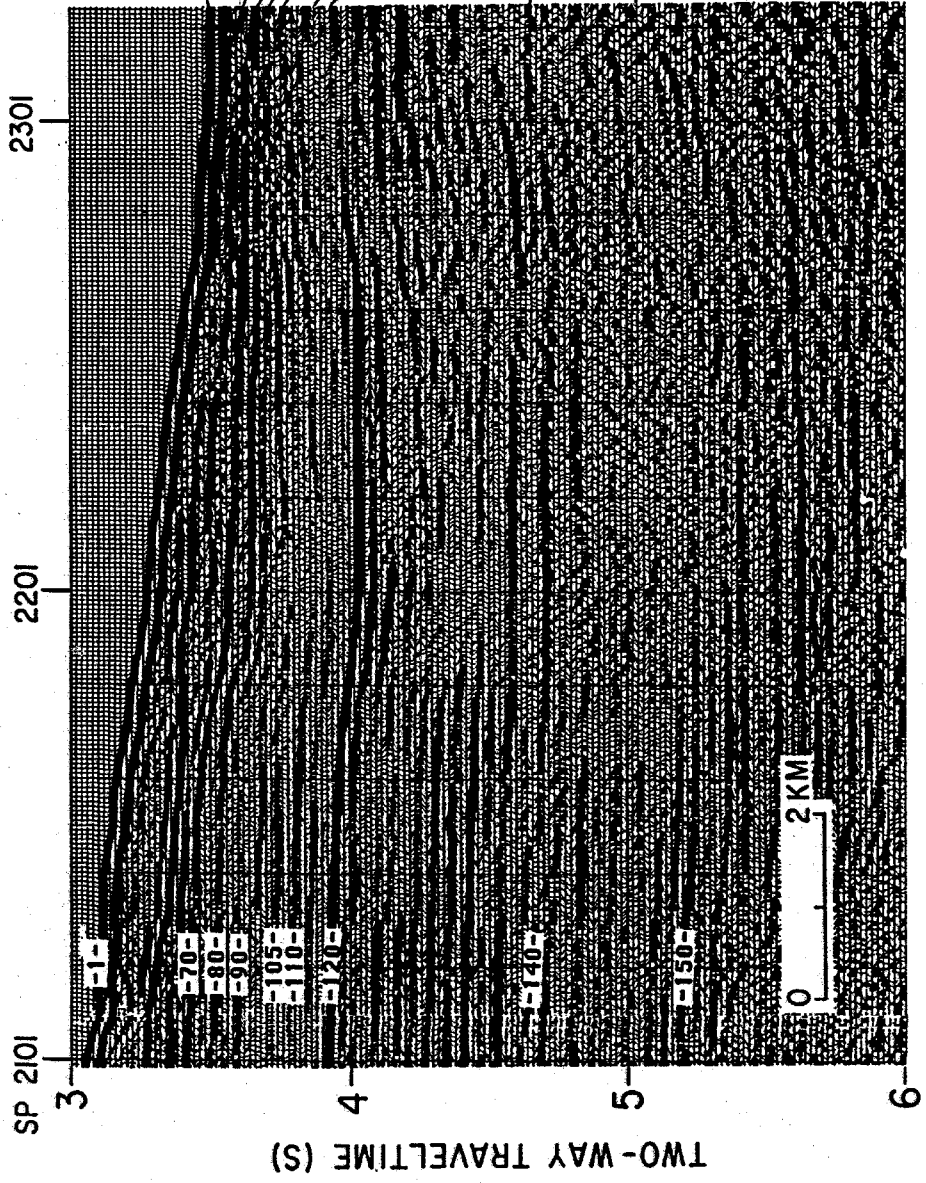
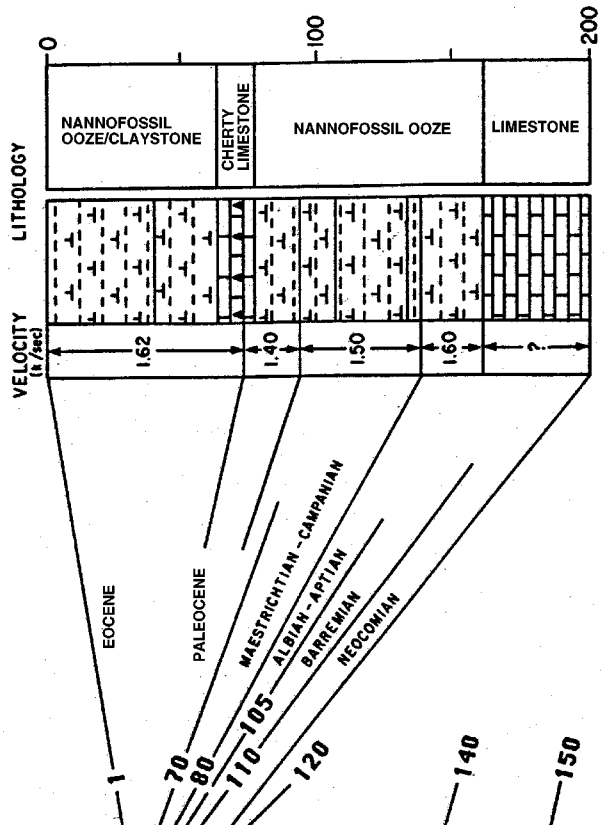
Shotpoints on MCS Line TD-5 UV



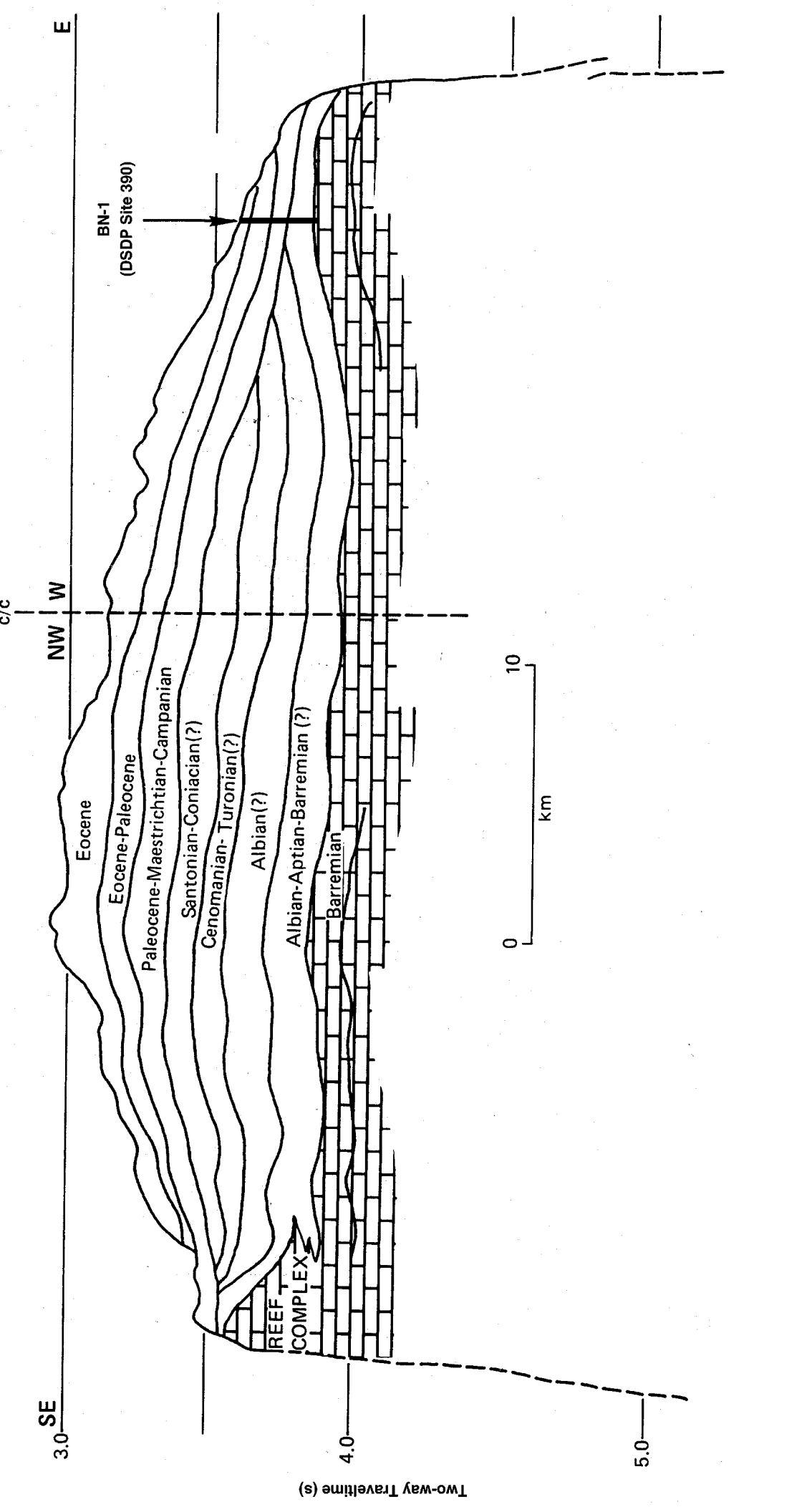
DSDP 390

USGS TD-5 UV

DEPTH (M)



TWO-WAY TRAVELTIME (S)



Site: BN-1 (DSDP Site 390)

Priority: 1

Position: 30°08.724'N, 76°06.9'W

Water depth: 2586 m

Sediment thickness: >3000 m

Total penetration: 160 mbsf

Seismic coverage: *Glomar Challenger, Eastward 80-8* (1980); site located at shotpoint 2321 on MCS Line TD-5.

Objectives: Determine history of Paleogene and Cretaceous water chemistry, carbonate productivity, and deep-water and surface temperature as well as evolutionary history of pelagic microfossils. Deep end-member of the depth transect.

Drilling program: 1. APC coring to 160 mbsf (oriented): Hole A.
2. Holes B and C cored to 160 mbsf by unoriented APC.

Logging and downhole:

Adara temperature measurements and core orientation on A hole.

Nature of rock anticipated:

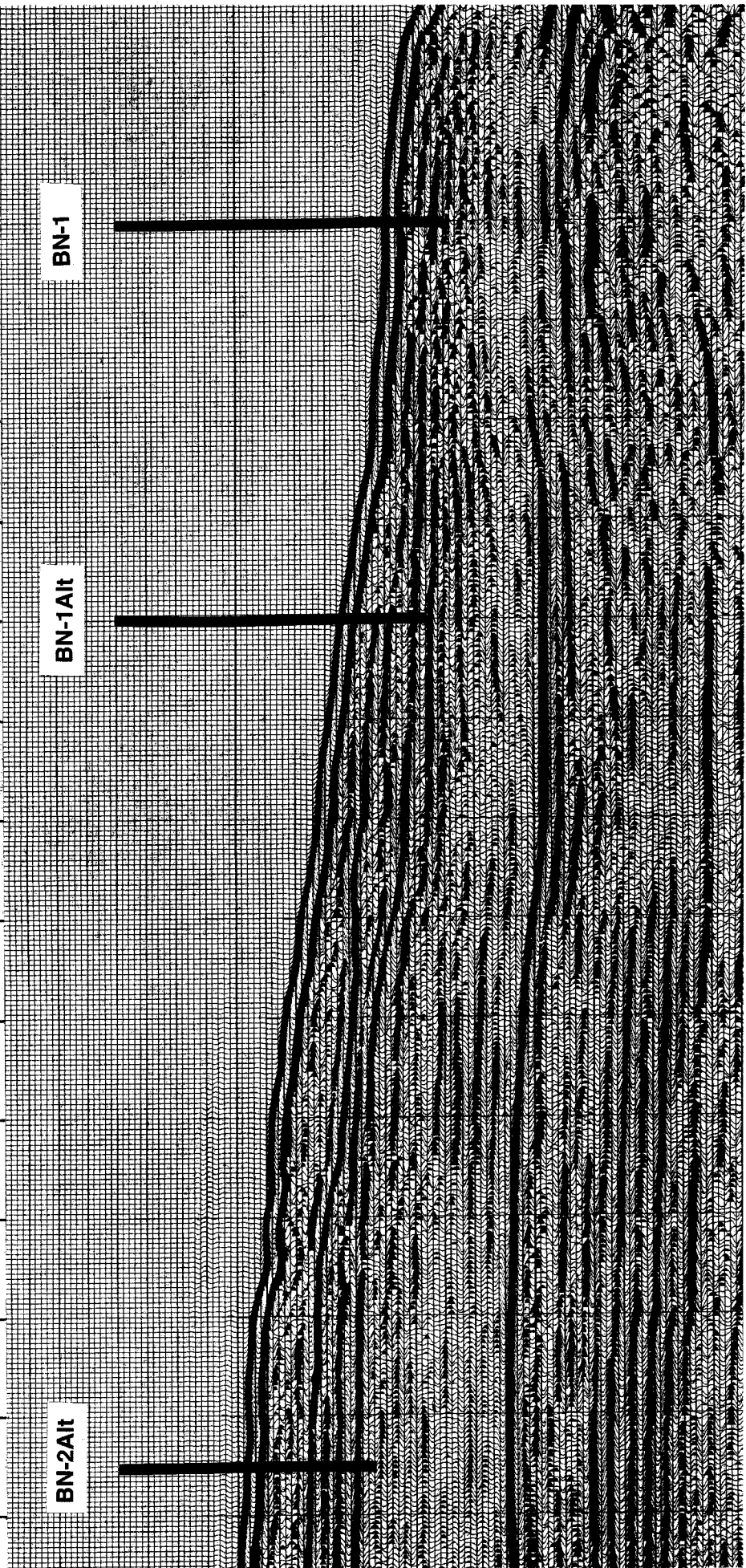
Nannofossil-foraminifer ooze, cherty limestone, calcareous clay.

Two-way Travelttime (s)

2.4
2.6
2.8
3.0
3.2
3.4
3.6
3.8
4.0
4.2
4.4
4.6

Depth 2251 2264 2277 2290 2324 2359 2393 2427 2454 2480 2507 2533 2560 2586

Shotpoint 2061 2081 2101 2121 2141 2161 2181 2201 2221 2241 2261 2281 2301 2321



BN-2AIt

BN-1AIt

BN-1

Site: BN-2Alt

Priority: 1

Position: 30°5.436'N, 76°14.412'W

Water depth: 2257 m

Sediment thickness: >3000 m

Seismic coverage: *Glomar Challenger*, *Gloria Farnella* 1987 SCS Line 18, *Gilliss* Line 26, *Eastward* 80-8; located at shotpoint 2071 on MCS Line TD-5UW.

Objectives:

Determine history of Paleogene and Cretaceous water chemistry, carbonate productivity, and deep-water and surface temperature as well as evolutionary history of pelagic microfossils. Core Paleocene–Eocene and Cretaceous–Paleogene boundaries for paleoceanographic, evolutionary, and stratigraphic studies. Intermediate-deep point of depth transect.

Drilling program:

1. APC coring to 160 mbsf or refusal (oriented): Hole A.
2. Holes B and C cored to 160 mbsf or refusal by unoriented APC.
3. Hole A deepened by XCB to 600 mbsf.

Logging and downhole operations:

Standard strings (triple-combo geophysical and FMS) and GHMT (magnetic susceptibility). Adara and WSTP temperature measurements may be run if time permits. Core orientation on at least the A hole.

Nature of rock anticipated:

Nannofossil-foraminifer ooze, chalk, cherty limestone, calcareous clay.

Site: BN-3

Priority: 1

Position: 30°3.306', 76°21.108'W

Water depth: 1972 m

Sediment thickness: >3000 m

Seismic coverage: *Glomar Challenger, Eastward 80-8* (1980); located at shotpoint 1821 on MCS Line TD-5UW.

Objectives:

Determine history of Paleogene and Cretaceous water chemistry, carbonate productivity, and deep-water and surface temperature as well as evolutionary history of pelagic microfossils. Core Paleocene–Eocene and Cretaceous–Paleogene boundaries for paleoceanographic, evolutionary, and stratigraphic studies. Mid-point of depth transect.

Drilling program:

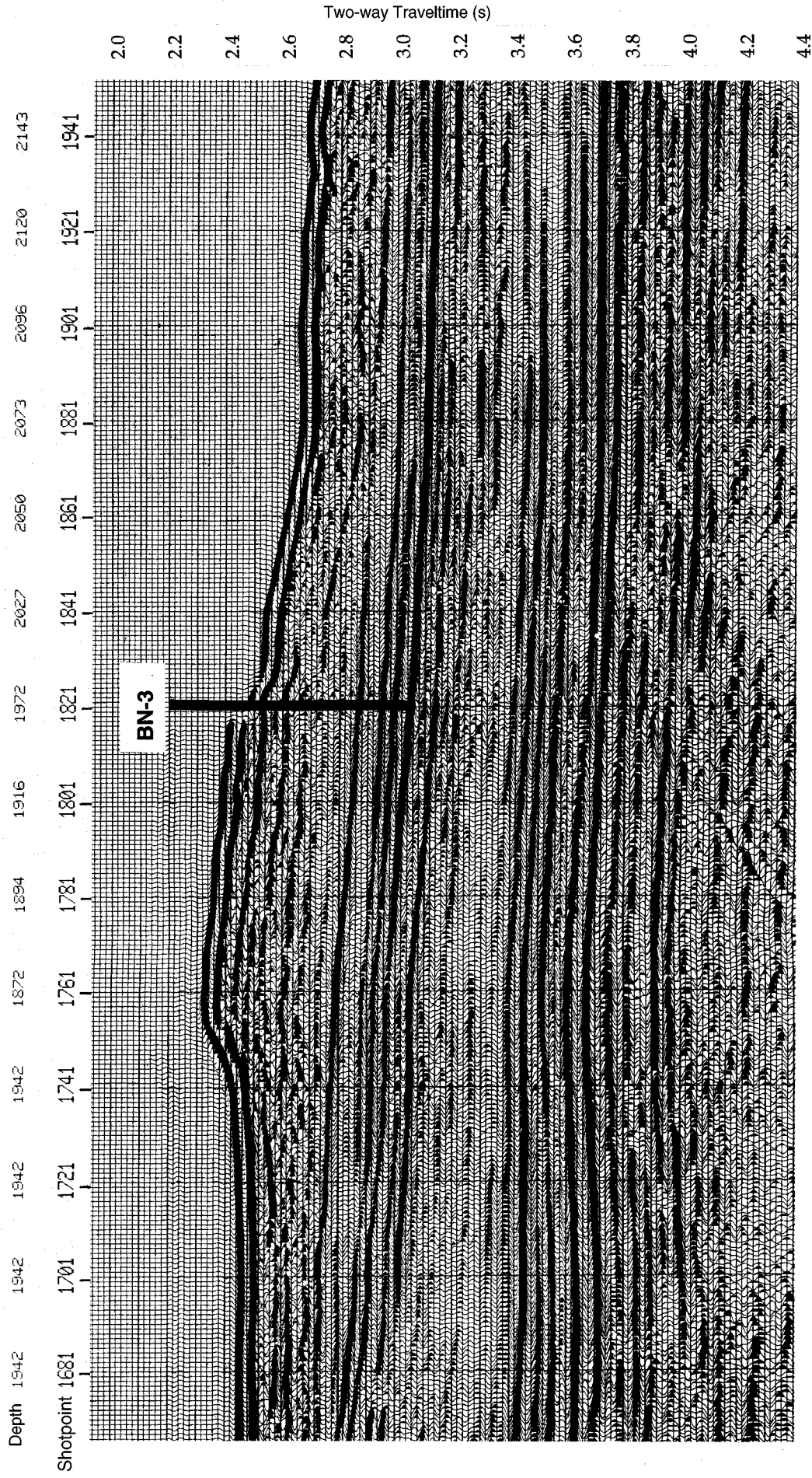
1. APC coring to 160 mbsf or refusal (oriented): Hole A.
2. Holes B and C cored to 160 mbsf or refusal by unoriented APC.
3. Holes A and B deepened by XCB to 600 mbsf. XCB drilling of Hole B may be abandoned depending upon results of Hole A.

Logging and downhole operations:

Standard strings (triple-combo geophysical and FMS) and GHMT (magnetic susceptibility). Adara and WSTP temperature measurements may be run if time permits. Core orientation on at least the A hole.

Nature of rock anticipated:

Nannofossil-foraminifer ooze, chalk, cherty limestone, calcareous clay.



Site: BN-4Alt

Priority: 1

Position: 29°59.538'N, 76°31.416'W

Water depth: 1652 m

Sediment thickness: >3000 m

Seismic coverage: *Gloria Farnella* 1987 SCS Line 19, TD5UW (shotpoint 1461).

Objectives:

Determine history of Paleogene and Cretaceous water chemistry, carbonate productivity, and deep-water and surface temperature as well as evolutionary history of pelagic microfossils. Core Paleocene–Eocene and Cretaceous–Paleogene boundaries for paleoceanographic, evolutionary, and stratigraphic studies. Shallow–intermediate point on depth transect.

Drilling program:

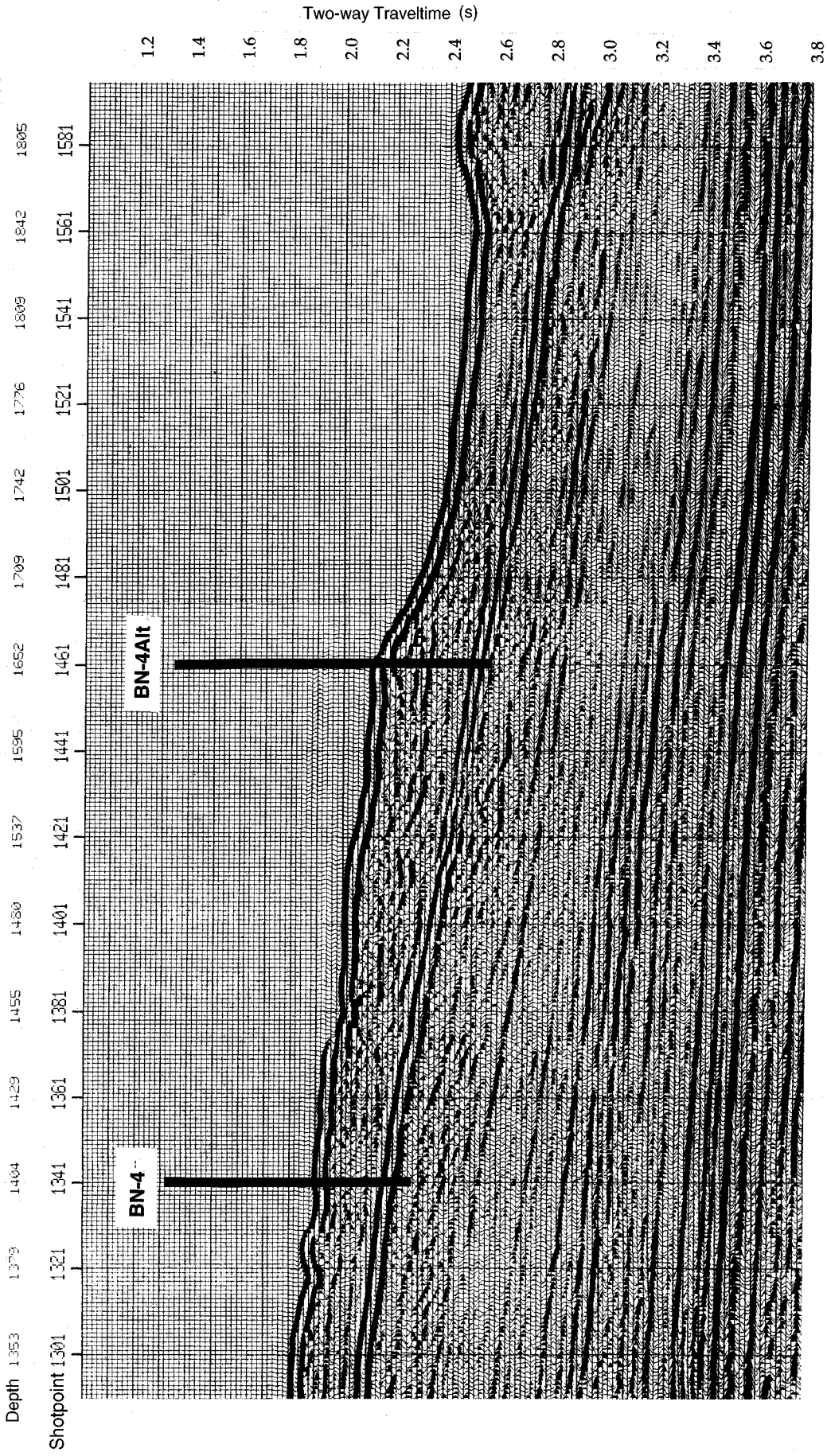
1. APC coring to 160 mbsf or refusal (oriented): Hole A.
2. Holes B and C cored to 160 mbsf or refusal by unoriented APC.
3. Hole A deepened by XCB to 500 mbsf.

Logging and downhole operations:

Standard strings (triple-combo geophysical and FMS) and GHMT (magnetic susceptibility). Adara and WSTP temperature measurements may be run if time permits. Core orientation on at least the A hole.

Nature of rock anticipated:

Nannofossil-foraminifer ooze, chalk, cherty limestone, calcareous clay.



Site: BN-5Alt

Priority: 1

Position: 29°57.090'N, 76°37.596'W

Water depth: 1293 m

Sediment thickness: >3000 m

Seismic coverage: *Gloria Farnella* 1987 SCS Line 20, TD5UW (shotpoint 1241).

Objectives:

Determine history of Paleogene and Cretaceous water chemistry, carbonate productivity, and deep-water and surface temperature as well as evolutionary history of pelagic microfossils. Core Paleocene–Eocene and Cretaceous–Paleogene boundaries for paleoceanographic, evolutionary, and stratigraphic studies. Shallow end-member of depth transect. May be deepened by up to 200 m if time permits to recover an expanded Aptian–Albian section.

Drilling program:

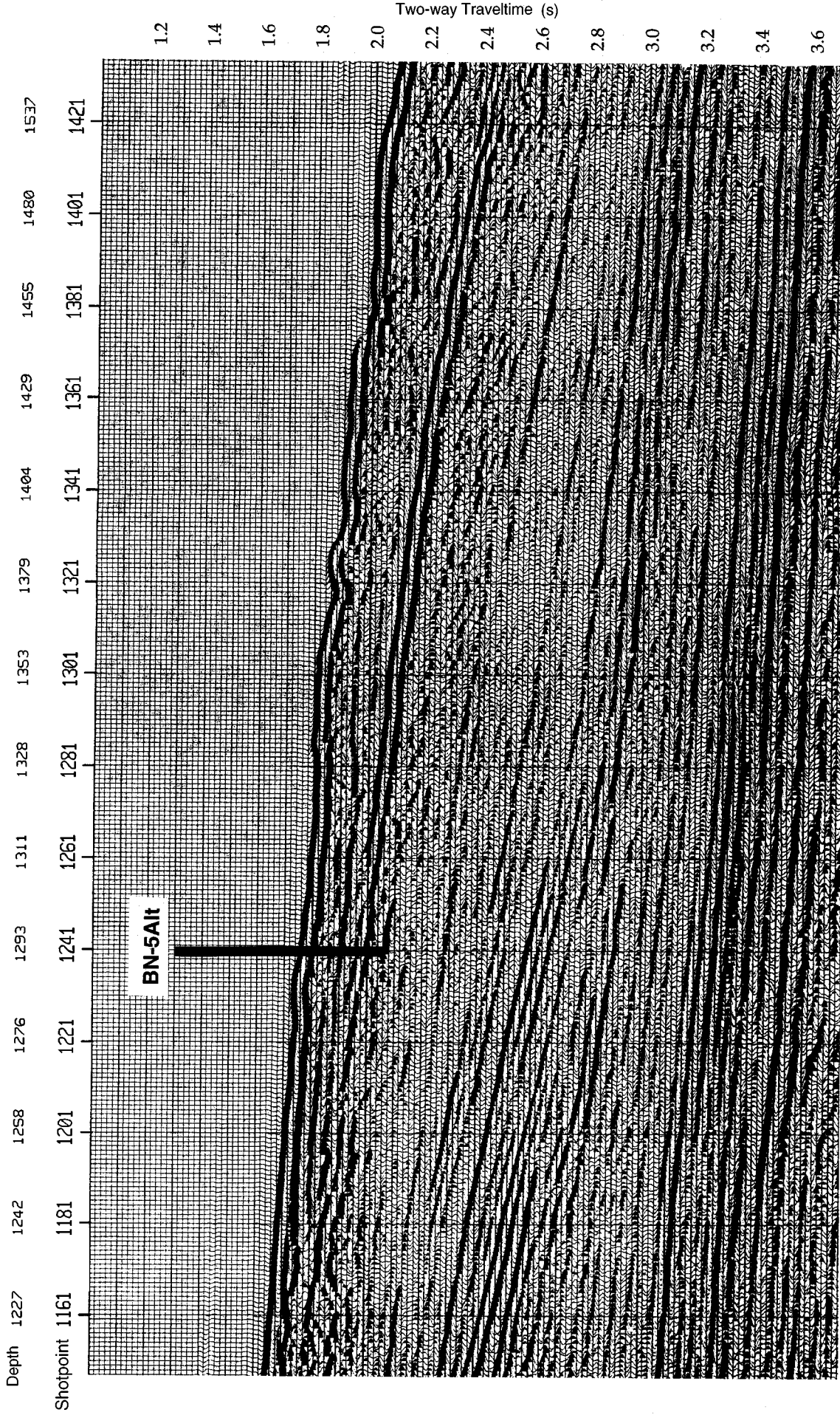
1. APC coring to 160 mbsf or refusal (oriented): Hole A.
2. Holes B and C cored to 160 mbsf or refusal by unoriented APC.
3. Holes A and B deepened by XCB to 450 mbsf. XCB drilling of Hole B may be abandoned depending upon results of Hole A.

Logging and downhole operations:

Standard strings (triple-combo geophysical and FMS) and GHMT (magnetic susceptibility). Adara and WSTP temperature measurements may be run if time permits. Core orientation on at least the A hole.

Nature of rock anticipated:

Nannofossil-foraminifer ooze, chalk, cherty limestone, calcareous clay.



Site: BN-1Alt

Priority: 2

Position: 30°7.884'N, 76°9.276'W

Water depth: 2480 m

Sediment thickness: >3000 m

Seismic coverage: *Glomar Challenger*, *Gloria Farnella* 1987, *Eastward* 80-8, located at shotpoint 2241 on MCS Line TD-5UW.

Objectives:

Determine history of Paleogene and Cretaceous water chemistry, carbonate productivity, and deep-water and surface temperature as well as evolutionary history of pelagic microfossils. Core Paleocene–Eocene and Cretaceous–Paleogene boundaries for paleoceanographic, evolutionary, and stratigraphic studies. Deep end-member of depth transect.

Drilling program:

1. APC coring to 160 mbsf or refusal (oriented): Hole A.
2. Holes B and C cored to 160 mbsf or refusal by unoriented APC.
3. Holes A and B deepened by XCB to 400 mbsf. XCB drilling of Hole B may be abandoned depending upon results of Hole A.

Logging and downhole operations:

Standard strings (triple-combo geophysical and FMS) and GHMT (magnetic susceptibility). Adara and WSTP temperature measurements may be run if time permits. Core orientation on at least the A hole.

Nature of rock anticipated:

Nannofossil-foraminifer ooze, chalk, cherty limestone, calcareous clay.

Site: BN-4

Priority: 2

Position: 29°58.368'N; 76°34.518'W

Water depth: 1404 m

Sediment thickness: >3000 m

Seismic coverage: *Gloria Farnella* 1987 SCS Line 19; located at shotpoint 1341 on MCS Line TD-5UW.

Objectives:

Determine history of Paleogene and Cretaceous water chemistry, carbonate productivity, and deep-water and surface temperature as well as evolutionary history of pelagic microfossils. Core Paleocene–Eocene and Cretaceous–Paleogene boundaries for paleoceanographic, evolutionary, and stratigraphic studies. Shallow–intermediate point of depth transect.

Drilling program:

1. APC coring to 160 mbsf or refusal (oriented): Hole A.
2. Holes B and C cored to 160 mbsf or refusal by unoriented APC.
3. Holes A, B, and C deepened by XCB to 550 mbsf. XCB drilling of Holes B and C may be abandoned depending upon results of Hole A.

Logging and downhole operations:

Standard strings (triple-combo geophysical and FMS) and GHMT (magnetic susceptibility). Adara and WSTP temperature measurements may be run if time permits. Core orientation on at least the A hole.

Nature of rock anticipated:

Nannofossil-foraminifer ooze, chalk, cherty limestone, calcareous clay.

Scientific Participants
Leg 171B: Blake Nose Paleocyanographic Transect

Co-Chief
Dick Kroon
Grant Institute, Department of Geology
and Geophysics
King's Buildings
West Mains Road
Edinburgh EH9 3JW
United Kingdom
Internet: dkroon@glg.ed.ac.uk
Work: (44) 131-650-8509
Fax: (44) 131-668-3184

Co-Chief
Richard D. Norris
Department of Geology and Geophysics
MS-23
Woods Hole, MA 02543-1541
U.S.A.
Internet: dick@cod.who.edu
Work: (508) 289-2839
Fax: (508) 289-2187

Staff Scientist
Adam Klaus
Ocean Drilling Program
1000 Discovery Drive
College Station, TX 77845-9547
U.S.A.
Internet : adam_klaus@odp.tamu.edu
Work: (409) 845-3055
Fax: (409) 845-0876

Inorganic Geochemist
Kristina L. Faul
Earth Sciences Board
Santa Cruz, CA 95064
U.S.A.
Internet: kristina@earthsci.ucsc.edu
Work: (408) 459-3123
Fax: (408) 459-3074

Inorganic Geochemist
Paul A. Wilson
Department of Earth Sciences
Downing Street
Cambridge CB2 3EQ

United Kingdom
Internet: paw1000@esc.cam.ac.uk
Work: (44) 1223-333-444
Fax: (44) 1223-333-450

Organic Geochemist
Charles E. Barker
Denver Federal Center
Box 25046
MS 971
Denver, CO 80226
U.S.A.
Internet: barker@bpgsvr.cr.usgs.gov
Work: (303) 236-5797
Fax: (303) 236-8822

Paleomagnetist
Leon Paul Bardot
Department of Earth Sciences
Parks Road
Oxford OX1 3PR
United Kingdom
Internet: leonb@earth.ox.ac.uk
Work: (44) 1865-272048
Fax: (44) 1865-272072

Paleomagnetist, Physical Properties
Specialist
Mutsumi Nakai
Department of Geology
3-23-1 Hyakunincho
Shinjyuku-ku
Tokyo 169
Japan
Internet: nakai@kahaku.go.jp
Work: (81) 3-5332-7164
Fax: (81) 3-3364-7104

Paleomagnetist
James G. Ogg
Department of Earth and Atmospheric
Sciences
Civil Bldg.
West Lafayette, IN 47907
U.S.A.
Internet: jogg@vm.cc.purdue.edu

Work: (317) 494-8681
Fax: (317) 496-1210

Paleontologist (Foraminifer)
Jean-Pierre Bellier
Laboratoire de Micropaléontologie
Tours 15-4° étage
4 place Jussieu
75252 Paris Cedex 05
France
Internet: bellier@ccr.jussieu.fr
Work: (33) 44-276-228
Fax: (33) 44-273-831

Paleontologist (Foraminifer)
Brian T. Huber
Department of Paleobiology
MRC: NHB 121
National Museum of Natural History
Washington, DC 20560
U.S.A.
Internet: huber.brian@nmnh.si.edu
Work: (202) 786-2658
Fax: (202) 786-2832

Paleontologist (Foraminifer)
Joen Widmark
Department of Marine Geology
413 81 Göteborg
Sweden
Internet: joen@marine-geology.gu.se
Work: (46) 31-773-4470
Fax: (46) 31-773-4903

Paleontologist (Nannofossil)
Isao Mita
Institute of Applied Sciences, Mining
College
Tegata-Gakuencho 1-1
Akita 010
Japan
Internet: i-mita@super.win.or.jp
Work: (81) 188-89-2371
Fax: (81) 188-37-0402

Paleontologist (Nannofossil)
Ms. Jean M. Self-Trail
Department of Geology
University of Nebraska, Lincoln

Lincoln, NE 68588-0340
U.S.A.
Internet: 00216047@bigred.unl.edu
Work: (402) 472-2663
Fax: (402) 472-4917

Paleontologist (Nannofossil)
David K. Watkins
Department of Geology
330 Bessey Hall
Lincoln, NE 68588-0340
U.S.A.
Internet: dwatkins@unlinfo.unl.edu
Work: (402) 472-2648
Fax: (402) 472-4917

Paleontologist (Radiolaria)
Charles D. Blome
Denver Federal Center
Box 25046
MS 919
Denver, CO 80225
U.S.A.
Internet:
cblome@greenwood.cr.usgs.gov
Work: (303) 236-5682
Fax: (303) 236-5690

Physical Properties Specialist
Leon J. Clarke
Department of Earth Sciences
Parks Road
Oxford OX1 3PR
United Kingdom
Internet: leonc@earth.ox.ac.uk
Work: (44) 1865-272-000
Fax: (44) 1865-272-072

Physical Properties Specialist
William Ussler III
Department of Geology
Chapel Hill, NC 27599-3315
U.S.A.
Internet: ussler@marine.unc.edu
Work: (919) 966-4516
Fax: (919) 966-4519

Sedimentologist
Jochen Erbacher

Geologisch-Paläontologisches Institut
Sigwartstraße 10
72076 Tübingen
Federal Republic of Germany
Internet: jochen.erbacher@uni-
tuebingen.de
Work: (49) 7071-297-378
Fax: (49) 7071-296-990

Sedimentologist
Mary Anne Holmes
Department of Geology
214 Bessey Hall
Lincoln, NE 68588-0340
U.S.A.
Internet: mholmes@unlinfo.unl.edu
Work: (402) 472-5211
Fax: (402) 472-4917

Sedimentologist
Miriam E. Katz
Lamont-Doherty Earth Observatory
Palisades, NY 10964
U.S.A.
Internet: mkatz@ldeo.columbia.edu
Work: (914) 365-8625
Fax: (914) 365-8154

Sedimentologist
Kenneth G. MacLeod
Department of Geological Sciences
AJ-20
Seattle, WA 98195
U.S.A.
Work: n/a
Fax: (206) 543-3836

Sedimentologist
Francisca C. Martinez-Ruiz
Departamento de Mineralogía y
Petrología
Avda. Fuentenueva s/n
18002 Granada
Spain
Internet: fmruiz@goliat.ugr.es
Work: (34) 58-243-351
Fax: (34) 58-243-075

Sedimentologist

Dorothy K. Pak
Department of Geological Sciences
Santa Barbara, CA 93106
U.S.A.
Internet: pak@magic.geol.ucsb.edu
Work: (805) 893-4181
Fax:

Sedimentologist
Thomas K. Pletsch
Geologisch-Paläontologisches Institut
Olshausenstraße 40-60
24118 Kiel
Federal Republic of Germany
Internet: tp@zaphod.gpi.uni-kiel.de
Work: (49) 431-880-2938
Fax: (49) 431-880-4376

Sedimentologist
Jan Smit
Instituut Voor Aardwetenschappen
de Boelelaan 1085
1081 HV Amsterdam
The Netherlands
Internet: smit@mailhost.geo.vu.nl
Work: (31) 20-444-7384
Fax: (31) 20-646-2457

LDEO Logging Scientist
Ian T. Alexander
Grant Institute, Department of Geology
and Geophysics
West Mains Road
Edinburgh EH9 3JW
United Kingdom
Internet: ialexand@glg.ed.ac.uk
Work: (44) 131-650-5943
Fax: (44) 131-668-3184

LDEO Logging Trainee
Sandra Marca
CEREGE
Plein Sud 1, #A2
Plan de Cuques 13380
France
Internet: n/a
Work: (33) 4-9168-6075
Fax: n/a

Schlumberger Engineer
Jonathan Krebs
369 Tristar Drive
Webster, TX 77598
U.S.A.
Internet: jkreb@webster.wireline.slb.com
Work: (713) 480-2000
Fax: (713) 480-9550

Operations Manager
Roland Lawrence
Ocean Drilling Program
1000 Discovery Drive
College Station, TX 77845
U.S.A.
Work: (409) 845-2099
Fax: n/a

Laboratory Officer
Burney Hamlin
Ocean Drilling Program
1000 Discovery Drive
College Station, TX 77845-9547
U.S.A.
Internet: burney_hamlin@odp.tamu.edu
Work: (409) 845-5716
Fax: (409) 845-2380

Assistant Laboratory Officer , Marine
Lab Specialist: X-Ray
Don Sims
Ocean Drilling Program
1000 Discovery Drive
College Station, TX 77845-9547
U.S.A.
Internet: don_sims@odp.tamu.edu
Work: (409) 845-2481
Fax: (409) 845-2380

Marine Lab Specialist: Yeoperson
Michiko Hitchcox
Ocean Drilling Program
1000 Discovery Drive
College Station, TX 77845-9547
U.S.A.
Internet:
michiko_hitchcox@odp.tamu.edu
Work: (409) 845-2483
Fax: (409) 845-2380

Marine Lab Specialist: Chemistry
John Lee
Ocean Drilling Program
1000 Discovery Drive
College Station, TX 77845-9547
U.S.A.
Internet: john_lee@odp.tamu.edu
Work: (409) 845-2481
Fax: (409) 845-2380

Marine Lab Specialist: Chemistry
Chieh Peng
Ocean Drilling Program
1000 Discovery Drive
College Station, TX 77845-9547
U.S.A.
Internet: chieh_peng@odp.tamu.edu
Work: (409) 845-2480
Fax: (409) 845-2380

Marine Lab Specialist: Curator
Lorraine Southey
Ocean Drilling Program
1000 Discovery Drive
College Station, TX 77845-9547
U.S.A.
Internet: lorraine_southey@odp.tamu.edu
Work: (409) 845-8482
Fax: (409) 845-1303

Marine Lab Specialist: Paleomagnetism
Edwin Garrett
Ocean Drilling Program
1000 Discovery Drive
College Station, TX 77845-9547
U.S.A.
Internet: edwin_garrett@odp.tamu.edu
Work: (409) 845-2481
Fax: (409) 845-2380

Marine Lab Specialist: Photographer
Tim Fulton
Ocean Drilling Program
1000 Discovery Drive
College Station, TX 77845-9547
U.S.A.
Internet: tim_fulton@odp.tamu.edu
Work: (409) 845-1183

Fax: (409) 845-4857

Marine Lab Specialist: Physical
Properties

Kevin MacKillop

Ocean Drilling Program

1000 Discovery Drive

College Station, TX 77845

U.S.A.

Internet: kevin_mackillop@odp.tamu.edu

Work: (409) 845-8482

Fax: (409) 845-2380

Marine Lab Specialist: Storekeeper

John Dyke

Ocean Drilling Program

1000 Discovery Drive

College Station, TX 77845-9547

U.S.A.

Internet: john_dyke@odp.tamu.edu

Work: (409) 845-2480

Fax: (409) 845-2380

Marine Lab Specialist: Underway

Geophysics

Dennis Graham

Ocean Drilling Program

1000 Discovery Drive

College Station, TX 77845-9547

U.S.A.

Internet: dennis_graham@odp.tamu.edu

Work: (409) 845-8482

Fax: (409) 845-2380

Marine Lab Specialist: X-Ray

Joel W. Sparks

Ocean Drilling Program

1000 Discovery Drive

College Station, TX 77845-9547

U.S.A.

Internet: joel_sparks@odp.tamu.edu

Work: (409) 845-2483

Fax: (409) 845-2380

Marine Computer Specialist

Terry Klepac

Ocean Drilling Program

1000 Discovery Drive

College Station, TX 77845-9547

U.S.A.

Internet: terry_klepac@odp.tamu.edu

Work: (409) 862-4849

Fax: (409) 845-2380

Marine Computer Specialist

Matt Mefferd

Ocean Drilling Program

1000 Discovery Drive

College Station, TX 77845-9547

U.S.A.

Internet: matt_mefferd@odp.tamu.edu

Work: (409) 862-4847

Fax: (409) 845-2380

Marine Electronics Specialist

Eric Meissner

Ocean Drilling Program

1000 Discovery Drive

College Station, TX 77845-9547

U.S.A.

Internet: eric_meissner@odp.tamu.edu

Work: (409) 845-2473

Fax: (409) 845-2380

Marine Electronics Specialist

Dwight Mossman

Ocean Drilling Program

1000 Discovery Drive

College Station, TX 77845-9547

U.S.A.

Internet:

dwight_mossman@odp.tamu.edu

Work: (409) 845-8482

Fax: (409) 845-2380

Database Developer - Other

Paul Albright

Work:

Fax:

Database Developer - Other

Glenn P. Corser

6500 Tracor Lane

Austin, TX 78725

U.S.A.

Internet: corser@galileo.tracor.com

Work: (512) 929-2042

Fax: (512) 929-4368